



**PARKWAY**SCHOOLS

HIGHER EXPECTATIONS. BRIGHTER FUTURES.

# Financial Statements

*Date: May 2020*

PARKWAY SCHOOL DISTRICT  
MONTHLY FINANCIAL REPORT  
TABLE OF CONTENT

<u>DOCUMENT</u>	<u>PAGE</u>
EXECUTIVE SUMMARY. . . . .	1 - 2
GRAPHS - REVENUE, EXPENDITURE, CASH, AND FUND BALANCE .	3 - 5
RECAPITULATION OF FUNDS . . . . .	6
ACCRUAL BALANCE SHEET. . . . .	7
BREAKOUT OF CASH AND INVESTMENTS . . . . .	8
MODIFIED ACCRUAL REVENUE SCHEDULE . . . . .	9
EXPENDITURE SUMMARY BY OBJECT . . . . .	10
EXPENDITURE SUMMARY BY BUILDING . . . . .	11
EXPENDITURE SUMMARY BY PROGRAM . . . . .	12 - 16
GLOSSARY . . . . .	17 - 18
PURCHASING REPORTS . . . . .	19 - 39



TO: Board of Education

DATE: June 30, 2020

FROM: Patricia Bedborough, CPA

RE: Executive Summary May 2020

Abstract

The May financial statements show a large increase in the operating fund balance as compared to previous year. We received our payment from tax payers who paid under protest in the month of May. In many of the previous years we received this payment in June. Receiving this early combined with the fabulous collection rate contribute heavily to our fund balance growth. When we look at the expenditures, you will see substantial savings. Our salaries and benefits are in line with our budget. We have continued to pay our employees even through the closure. We do have a sharp decline in our supplies and our purchased services. Item to note include reduced substitute teachers, reduced instructional materials and reduced energy costs.

Even with the loss of the Financial Institution Tax revenue, reduced Prop C and state withholdings for formula funding and transportation, we will end this year with a possible substantial growth in our operating fund balance. We will need this to help us weather the storm over the next few years potentially.

Future Issues

The following issues are still pending and could affect district finances in the future:

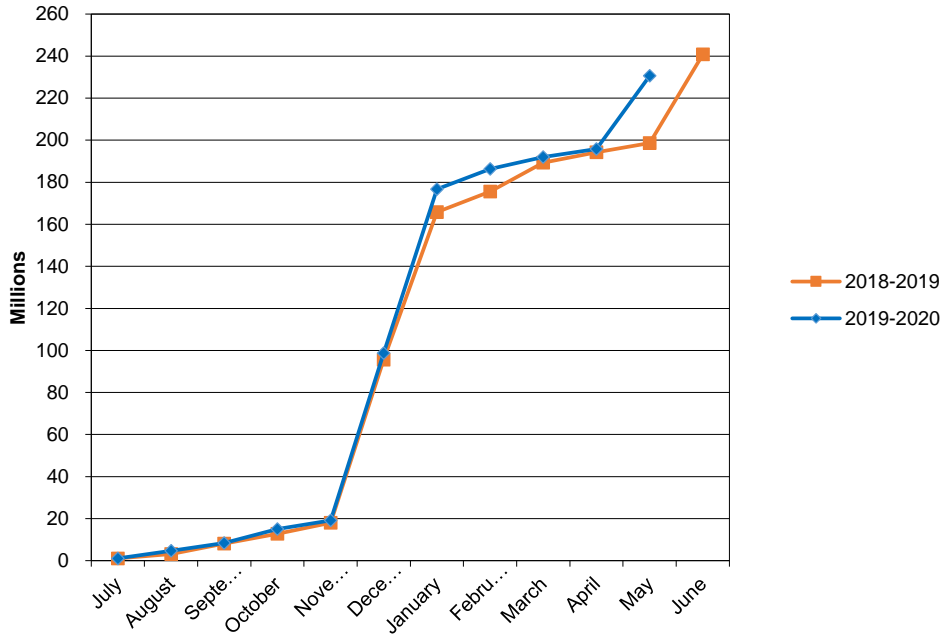
1. Health Insurance Costs – Health costs are a large portion of our benefit expenses. Our pharmacy benefit manager is through Business Health Coalition and we have substantial savings over market trends for our pharmacy. We have opened our near site clinics for our employees and staff effective August 2018. We had no increase in our premiums for 2019 and 2020. Our wellness programs are very strong. We have begun reviewing options for our health care premiums for next year. One of our budget reductions was a 1% decrease in the medical insurance premium.
2. Commercial Property Assessments Appeals – As you are aware this has been a struggle over the last several years. We have seen our collection rate fluctuate due to these settlements. We worked with the state auditor's office last year and have approved \$7.2 million in recoupment. Included in this year we have levied .1326 to the capital projects fund from our prior years recoupment calculations. We just received our report from St. Louis County of 2019 payments paid under protest. This amount is just over \$34 million. This is an increase over previous year, but this was a reassessment year. In a meeting with the Assessor in March, he stated that settlements overall are down in St. Louis County mainly due to a

reduced amount of backlog. The Tax Commission is also delayed at this time. We should finish this year with a stronger collection rate. Currently we have not received a negative payment. This has not happened in several years.

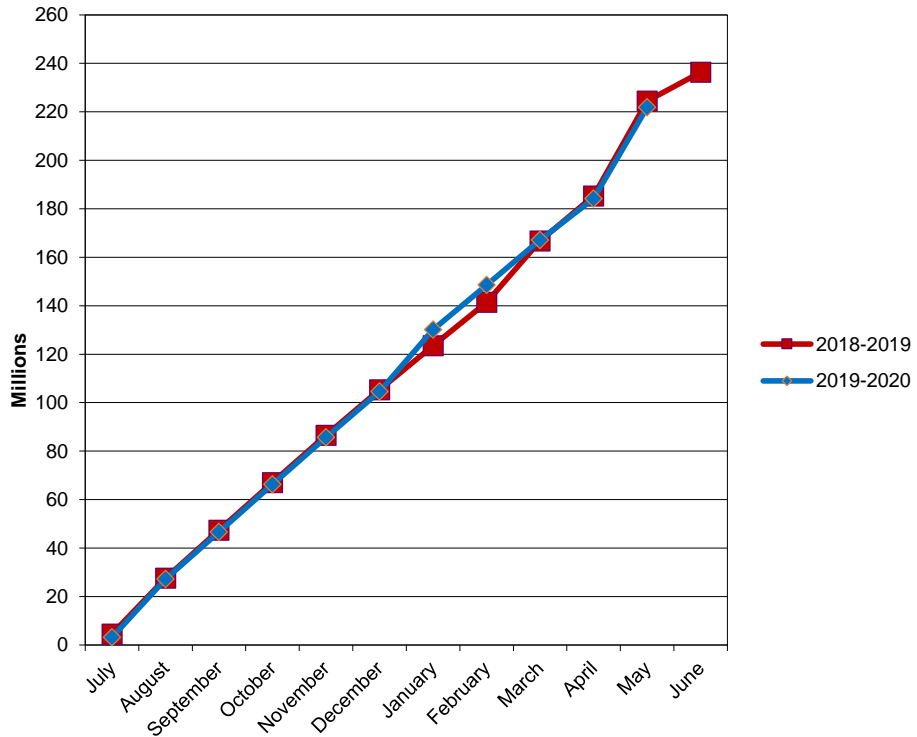
3. New Construction Assessments - In September we received our final amounts from St. Louis County. We had another strong year with new construction with just over \$25 million in commercial and residential property. We should receive our first new construction estimate for next year in July.
4. Interest Income –Early in the fiscal year interest rates were stabilizing. As we make our investment of funds, we will be able to project an interest income this year. Our interest from our banking account is slightly lower rate from last year due to the Fed’s lowering the treasury rate.
5. State Revenue –DESE will be adjusting the State Adequacy Target for the formula revenues. The State Adequacy Target is still well below the amount determined by the original formula legislation. The governor announced in early June that they will be applying 3.5% a proration rate to all districts for our formula funding.
6. Spot Market Purchases – For information purposes, fiscal year-to-date purchases under the spot market procurement policy are as follows:

Fuel (Facilities)	\$	82,166.11
Fuel (Trans)	\$	289,065.45
Paper	\$	165,311.60
Trash Liner	\$	39,926.00
Produce:	\$	70,850.00

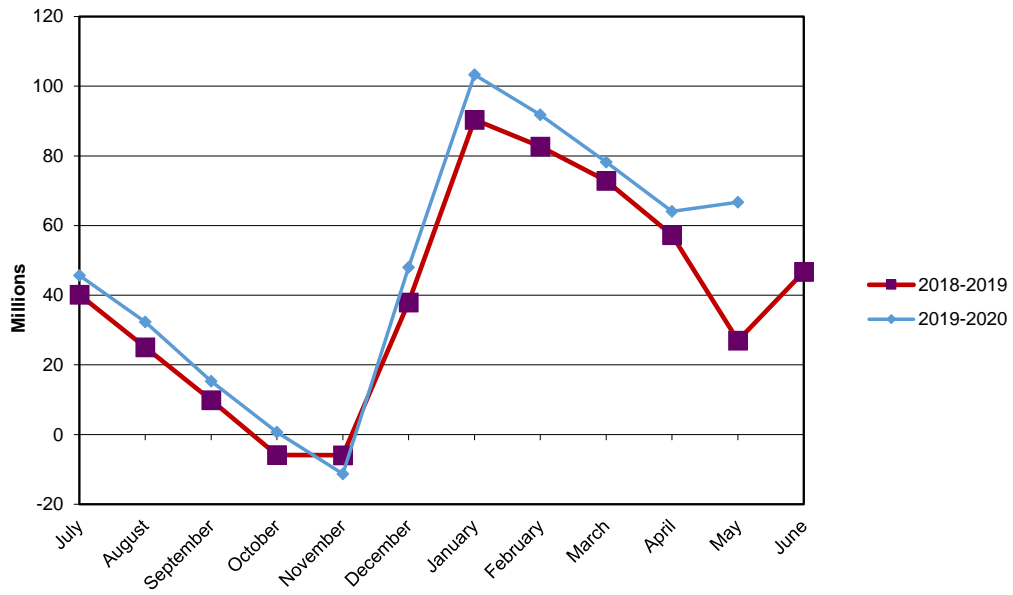
## PARKWAY SCHOOL DISTRICT ACTUAL OPERATING REVENUE

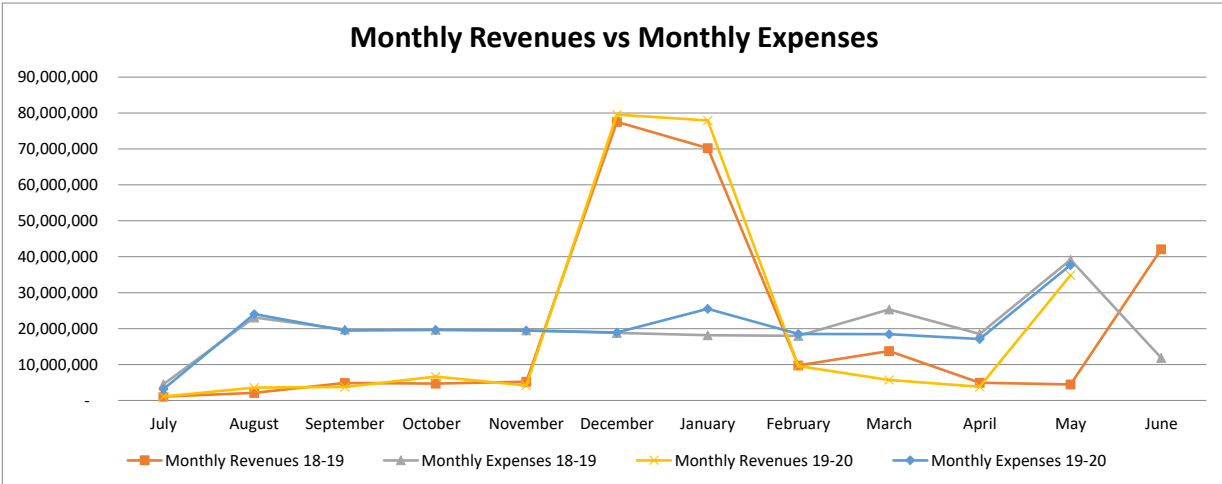
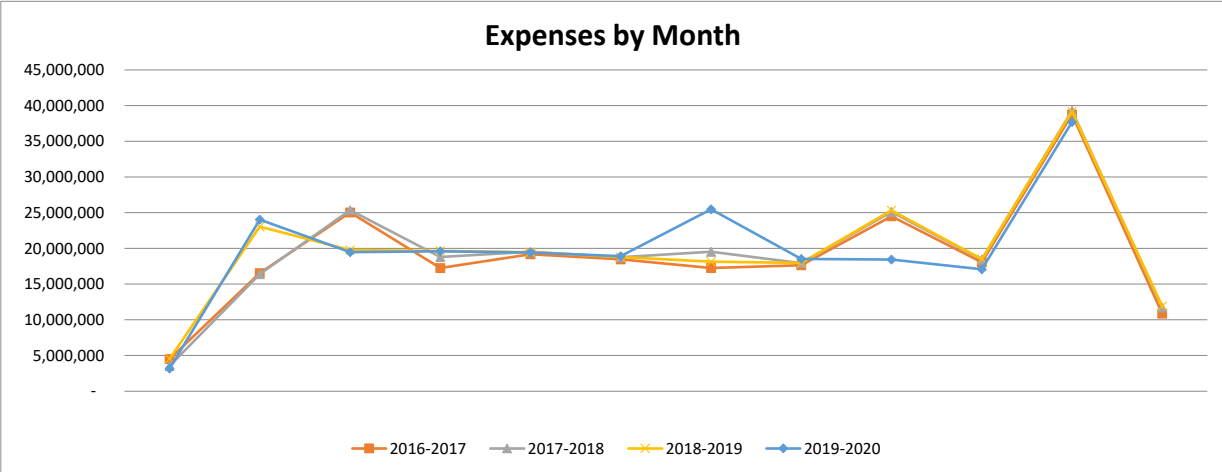
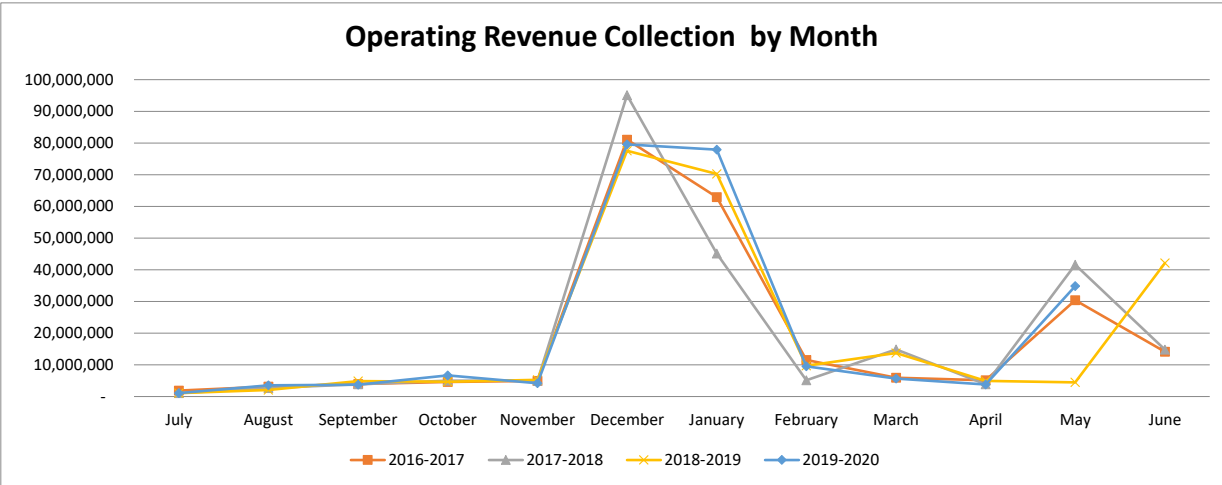


## PARKWAY SCHOOL DISTRICT ACTUAL OPERATING EXPENDITURES



# PARKWAY SCHOOL DISTRICT OPERATING FUND CASH AND INVESTMENTS





**Parkway School District  
Recapitulation of Funds  
Budget 2019-2020 With Restatement of Opening Balances**

FY2020 Full Year Projection

	<b>Operating</b>	<b>Debt Service</b>	<b>Capital Projects</b>	<b>2014 Bond Issue</b>	<b>2018 Bond Issue</b>	<b>All Funds</b>
Beginning Fund Balance	48,429,219	36,159,219	9,572,874	1,695,162	54,457,598	150,314,072
Revenues	239,997,682	25,561,295	7,718,262	10,000	500,000	273,787,239
Expenses	238,875,857	53,117,783	5,775,243	1,705,162	35,000,000	334,474,045
Ending Fund Balance	49,551,044	8,602,731	11,515,893	-	19,957,598	89,627,266

ACTUAL FY20 THROUGH 5/31/20

	<b>Operating</b>	<b>Debt Service</b>	<b>Capital Projects</b>	<b>2014 Bond Issue</b>	<b>2018 Bond Issue</b>	<b>All Funds</b>
Beginning Fund Balance	48,429,219	36,159,219	9,572,874	1,695,162	54,457,598	150,314,072
Revenues	230,598,574	26,442,353	7,597,739	23,613	752,594	265,414,873
Expenses	221,857,675	50,900,426	3,486,193	1,265,812	21,405,690	298,915,796
Transfers	-	-	-	-	-	-
Ending Fund Balance	57,170,118	11,701,146	13,684,420	452,963	33,804,502	116,813,149

ACTUAL FY19 THROUGH 5/31/19

	<b>Operating</b>	<b>Debt Service</b>	<b>Capital Projects</b>	<b>2014 Bond Issue</b>	<b>2018 Bond Issue</b>	<b>All Funds</b>
Beginning Fund Balance	46,492,486	36,717,985	2,253,613	17,496,421	-	102,960,505
Revenues	198,666,261	19,800,187	6,324,468	176,599	59,876,057	284,843,572
Expenses	224,443,881	23,112,317	2,137,600	15,467,875	3,176,287	268,337,960
Transfers	-	-	-	-	-	-
Ending Fund Balance	20,714,866	33,405,855	6,440,481	2,205,145	56,699,770	119,466,116



**PARKWAY SCHOOL DISTRICT  
ACCUAL BALANCE SHEET  
May 31, 2020**

	<b>TOTAL- ALL FUNDS 5/31/2020</b>	<b>TOTAL- ALL FUNDS 5/31/2019</b>
<b>ASSETS</b>		
Cash & Investments	\$ 145,179,145	145,346,404
Accounts Receivable	(19,888)	219,335
Inventories	737,121	763,977
Prepaid Expenses	1,815,981	1,991,894
Land	3,457,837	3,457,837
Land Improvements	15,628,730	17,072,007
Buildings/Improvements	200,708,807	163,361,983
Construction in Progress	21,129,217	50,522,194
Equipment	12,077,431	12,674,728
<b>Total Assets</b>	<b>\$ 400,714,381</b>	<b>395,410,359</b>
<b>LIABILITIES &amp; FUND BALANCE</b>		
Accounts Payable - Operating Funds	\$ 865,013	875,988
Accounts Payable - Bond Issue Funds	25,864	25,864
Accounts Payable - Medical Fund	-	-
Wages, Payroll Taxes, and Benefits Payable	8,640,384	8,373,502
Bonds Payable	245,760,000	190,760,000
Interest Payable	2,860,637	2,578,845
Liability for Compensated Absences	1,135,584	1,502,251
Liability for Early Retirement	205,016	902,168
<b>Total Liabilities</b>	<b>\$ 259,492,498</b>	<b>205,018,618</b>
Bond Issue Fund Balance	34,257,465	58,904,915
Debt Service Fund Balance	11,701,146	33,405,855
Capital Projects Fund Balance	13,684,420	6,440,481
Equity in Fixed Assets less Long Term Liabilities	3,040,785	51,345,485
Medical Fund Balance	21,367,949	19,580,140
Operating Fund Balance	57,170,118	20,714,866
<b>Total Fund Balance</b>	<b>\$ 141,221,883</b>	<b>190,391,741</b>
<b>TOTAL LIABILITIES &amp; FUND BALANCE</b>	<b>\$ 400,714,381</b>	<b>395,410,359</b>

**BREAKOUT OF CASH & INVESTMENT BALANCE**

	<u>5/31/2020</u>	<u>5/31/2019</u>
MEDICAL FUND CASH	21,367,948	19,580,140
DEBT SERVICE FUND CASH	11,700,831	33,405,664
DEBT SERVICE FUND INVESTMENTS	315	190
BOND ISSUE FUND CASH	26,941,148	58,871,246
BOND ISSUE FUND INVESTMENTS	7,290,453	7,805
CAPITAL PROJECTS FUND CASH	11,159,419	6,531,807
OPERATING FUND CASH	26,672,368	26,949,552
OPERATING FUND INVESTMENTS	40,046,663	-
<b>TOTAL</b>	<b>145,179,145</b>	<b>145,346,404</b>

**RESTRICTED RESERVE**

	<u>5/31/2020</u>	<u>5/31/2019</u>
FOOD SERVICE	(595,078)	285,301
MEDICAL BENEFITS	21,367,949	19,580,140
STUDENT ACTIVITY	3,101,734	3,301,696
<b>TOTAL</b>	<b>23,874,605</b>	<b>23,167,137</b>

PARKWAY SCHOOL DISTRICT  
MODIFIED ACCRUAL REVENUE SCHEDULE  
TOTAL ALL FUNDS

	YEAR TO DATE 5/31/2020				YEAR TO DATE 5/31/2019			
	BUDGETED REVENUE	REVENUE REALIZED	% REALIZED	BALANCE TO BE REALIZED	REVENUE** 6/30/2018	REVENUE REALIZED	% REALIZED	BALANCE TO BE REALIZED
<b>LOCAL</b>								
Property Taxes	176,525,290	179,671,434	101.78%	(3,146,144)	171,474,393	143,644,534	83.77%	27,829,859
Delinquent Property Taxes	-	1,746,524	0.00%	(1,746,524)	(1,577,667)	-	0.00%	(1,577,667)
Sales Tax	15,760,010	12,008,523	76.20%	3,751,487	16,059,749	11,917,244	74.21%	4,142,505
M&M Surtax	4,653,273	5,390,604	115.85%	(737,331)	4,596,653	3,066,005	66.70%	1,530,648
Food Service	3,395,236	3,331,179	98.11%	64,057	4,016,924	4,047,777	100.77%	(30,853)
Other Local	4,130,709	2,673,703	64.73%	1,457,006	9,931,468	10,143,583	102.14%	(212,115)
VICC-VST Revenue	7,292,893	2,046,692	28.06%	5,246,201	8,651,877	2,598,087	30.03%	6,053,790
<b>TOTAL LOCAL</b>	<b>211,757,411</b>	<b>206,868,659</b>	<b>97.69%</b>	<b>4,888,752</b>	<b>213,153,397</b>	<b>175,417,230</b>	<b>82.30%</b>	<b>37,736,167</b>
<b>INTEREST</b>	<b>650,000</b>	<b>827,133</b>	<b>127.25%</b>	<b>(177,133)</b>	<b>1,318,398</b>	<b>1,104,933</b>	<b>83.81%</b>	<b>213,465</b>
<b>COUNTY</b>	<b>4,187,879</b>	<b>4,046,662</b>	<b>96.63%</b>	<b>141,217</b>	<b>3,423,638</b>	<b>3,316,254</b>	<b>96.86%</b>	<b>107,384</b>
<b>STATE</b>								
Basic Formula	2,528,168	3,664,068	144.93%	(1,135,900)	2,411,230	2,233,464	92.63%	177,766
Classroom Trust	6,435,088	4,965,474	77.16%	1,469,614	6,436,222	5,324,822	82.73%	1,111,400
Transportation	1,394,002	1,223,625	87.78%	170,377	1,230,079	1,127,673	91.67%	102,406
Other State	1,602,279	951,605	59.39%	650,674	1,805,336	1,919,488	106.32%	(114,152)
<b>TOTAL STATE</b>	<b>11,959,537</b>	<b>10,804,772</b>	<b>90.34%</b>	<b>1,154,765</b>	<b>11,882,867</b>	<b>10,605,447</b>	<b>89.25%</b>	<b>1,277,420</b>
<b>FEDERAL</b>								
Federal Food Service	1,825,276	1,572,289	86.14%	252,987	2,108,374	1,910,371	90.61%	198,003
Other Federal Entitlements	2,876,271	2,153,029	74.85%	723,242	2,703,424	1,548,480	57.28%	1,154,944
<b>TOTAL FEDERAL</b>	<b>4,701,547</b>	<b>3,725,318</b>	<b>79.24%</b>	<b>976,229</b>	<b>4,811,798</b>	<b>3,458,851</b>	<b>71.88%</b>	<b>1,352,947</b>
<b>OTHER FINANCING SOURCES</b>								
Transportation Reimbursement	3,108,435	1,625,706	52.30%	1,482,729	2,638,360	1,342,366	50.88%	1,295,994
Tuition From Other Districts	90,000	54,633	60.70%	35,367	118,997	98,780	83.01%	20,217
Sale Of Property	42,873	5,359	12.50%	37,514	42,873	38,034	88.71%	4,839
<b>TOTAL OTHER FINANCING SOURCES</b>	<b>3,241,308</b>	<b>1,685,698</b>	<b>52.01%</b>	<b>1,555,610</b>	<b>2,800,230</b>	<b>1,479,180</b>	<b>52.82%</b>	<b>1,321,050</b>
<b>SUB-TOTAL OPERATING REVENUE</b>	<b>236,497,682</b>	<b>227,958,242</b>	<b>96.39%</b>	<b>8,539,440</b>	<b>237,390,328</b>	<b>195,381,895</b>	<b>82.30%</b>	<b>42,008,433</b>
<b>STUDENT ACTIVITIES</b>	<b>3,500,000</b>	<b>2,640,332</b>	<b>75.44%</b>	<b>859,668</b>	<b>3,387,145</b>	<b>3,284,366</b>	<b>96.97%</b>	<b>102,779</b>
<b>TOTAL OPERATING REVENUE</b>	<b>239,997,682</b>	<b>230,598,574</b>	<b>96.08%</b>	<b>9,399,108</b>	<b>240,777,473</b>	<b>198,666,261</b>	<b>82.51%</b>	<b>42,111,212</b>
<b>NON-OPERATING REVENUES</b>								
2019 Bond Issue	-	-	0.00%	-	55,000,000	59,876,057	108.87%	(4,876,057)
2019 Bond Issue Interest/Premium	500,000	752,594	0.00%	(252,594)	5,195,531	-	0.00%	5,195,531
2014 Bond Issue Interest/Premium	10,000	23,613	0.00%	(13,613)	199,786	176,599	88.39%	23,187
Debt Service Property Taxes	24,366,081	24,941,641	102.36%	(575,560)	22,420,935	18,782,074	83.77%	3,638,861
Debt Service Delinquent Prop. Taxes	-	242,449	0.00%	-	(206,286)	-	0.00%	(206,286)
Debt Service Interest/Premium	505,192	527,463	104.41%	(22,271)	747,336	402,227	53.82%	345,109
Debt Service County Revenue	690,022	730,800	105.91%	(40,778)	641,617	615,886	95.99%	25,731
Cap. Projects Property Taxes	6,593,760	6,749,513	102.36%	(155,753)	6,849,824	5,738,115	0.00%	1,111,709
Cap. Projects Delinquent Prop. Taxes	-	65,610	0.00%	-	(63,022)	-	100.00%	(63,022)
Capital Projects Other	824,002	557,773	67.69%	(257,773)	928,348	281,452	0.00%	646,896
Marketing Agreement	300,000	224,167	74.72%	-	317,917	304,583	95.81%	13,334
Capital Interest/Premium	500	676	135.20%	(176)	1,222	318	26.02%	904
<b>TOTAL ALL REVENUE SOURCES</b>	<b>273,787,239</b>	<b>265,414,873</b>	<b>96.94%</b>	<b>8,372,366</b>	<b>332,810,681</b>	<b>284,843,572</b>	<b>85.59%</b>	<b>47,967,109</b>

EXPENDITURE SUMMARY BY OBJECT  
TOTAL ALL FUNDS  
MAY 31, 2020

	BUDGET 2019-2020	ACTUAL EXPENDITURES YTD 5/31/2020	% EXPENDED 2019-2020	ACTUAL** EXPENDITURES 06/30/2019	ACTUAL EXPENDITURES YTD 5/31/2019	% EXPENDED 2018-2019	CHANGE FROM PRIOR YEAR \$	%
<b>SALARIES</b>								
Certificated	102,864,414	100,078,412	97.29%	100,050,706	98,752,946	98.70%	1,325,466	-1.41%
Classified	38,746,304	33,477,318	86.40%	37,875,070	34,216,941	90.34%	(739,623)	-3.94%
Administrative	12,497,566	11,758,390	94.09%	12,128,795	11,198,696	92.33%	559,694	1.75%
<b>TOTAL SALARIES</b>	<b>154,108,284</b>	<b>145,314,120</b>	<b>94.29%</b>	<b>150,054,571</b>	<b>144,168,583</b>	<b>96.08%</b>	<b>1,145,537</b>	<b>-1.78%</b>
<b>BENEFITS</b>								
Retirement, Social Security and Medicare	26,480,541	24,708,889	93.31%	25,367,886	24,452,106	96.39%	256,783	-3.08%
Medical, Dental and Life Insurance	27,663,058	25,642,490	92.70%	28,044,920	26,858,679	95.77%	(1,216,189)	-3.07%
<b>TOTAL BENEFITS</b>	<b>54,143,599</b>	<b>50,351,379</b>	<b>93.00%</b>	<b>53,412,806</b>	<b>51,310,785</b>	<b>96.06%</b>	<b>(959,406)</b>	<b>-3.07%</b>
<b>PURCHASED SERVICES</b>								
Substitute Services	2,475,354	2,167,474	87.56%	2,695,542	2,710,667	100.56%	(543,193)	-13.00%
Tuition	192,882	50,401	26.13%	173,834	79,165	45.54%	(28,764)	-19.41%
Professional Services	3,414,616	1,554,317	45.52%	2,172,772	1,907,513	87.79%	(353,196)	-42.27%
Audit	41,000	31,500	76.83%	33,800	33,800	100.00%	(2,300)	-23.17%
Technical Services	92,400	62,767	67.93%	113,782	112,746	99.09%	(49,979)	-31.16%
Legal Services	215,000	176,272	81.99%	179,905	151,061	83.97%	25,211	-1.98%
Property Services	3,114,849	2,301,200	73.88%	2,198,123	1,895,735	86.24%	405,465	-12.36%
Travel & Contracted Trans.	1,601,187	1,376,708	85.98%	1,631,375	1,392,742	85.37%	(16,034)	0.61%
Property Insurance	879,000	858,670	97.69%	864,490	823,526	95.26%	35,144	2.43%
Liability Insurance	874,095	891,639	102.01%	845,825	837,432	99.01%	54,207	3.00%
Other Purchased Services	1,693,704	1,180,667	69.71%	1,477,766	1,282,079	86.76%	(101,412)	-17.05%
<b>TOTAL PURCHASED SERVICES</b>	<b>14,594,087</b>	<b>10,651,615</b>	<b>72.99%</b>	<b>12,387,214</b>	<b>11,226,466</b>	<b>90.63%</b>	<b>(574,851)</b>	<b>-17.64%</b>
<b>CONSUMABLES</b>								
General Supplies	3,700,000	2,550,060	68.92%	3,670,818	2,319,745	63.19%	230,315	5.73%
Instructional Supplies	7,409,142	5,664,504	76.45%	6,634,988	6,548,680	98.70%	(884,176)	-22.25%
Library Books	363,330	289,412	79.66%	298,061	254,415	85.36%	34,997	-5.70%
Gasoline/Diesel	658,200	404,667	61.48%	652,224	587,933	90.14%	(183,266)	-28.66%
Energy Services	3,915,000	2,478,114	63.30%	3,576,865	2,939,977	82.19%	(461,863)	-18.90%
Food Service Supplies	2,643,000	1,933,469	73.15%	2,393,954	2,377,277	99.30%	(443,808)	-26.15%
<b>TOTAL CONSUMABLES</b>	<b>18,688,672</b>	<b>13,320,226</b>	<b>71.27%</b>	<b>17,226,910</b>	<b>15,028,027</b>	<b>87.24%</b>	<b>(1,707,801)</b>	<b>-15.96%</b>
<b>OPERATING LEASES</b>	<b>41,215</b>	<b>2,465</b>	<b>5.98%</b>	<b>41,215</b>	<b>41,215</b>	<b>100.00%</b>	<b>(38,750)</b>	<b>-94.02%</b>
<b>SUBTOTAL OPERATING EXPENSES</b>	<b>241,575,857</b>	<b>219,639,805</b>	<b>90.92%</b>	<b>233,122,716</b>	<b>221,775,076</b>	<b>95.13%</b>	<b>(2,135,271)</b>	<b>-4.21%</b>
<b>STUDENT ACTIVITIES</b>	<b>3,500,000</b>	<b>2,217,870</b>	<b>63.37%</b>	<b>3,218,024</b>	<b>2,668,805</b>	<b>82.93%</b>	<b>(450,935)</b>	<b>-19.57%</b>
<b>ANTICIPATED EXPENDITURE SAVINGS</b>	<b>(6,200,000)</b>	<b>-</b>	<b>0.00%</b>	<b>-</b>	<b>-</b>	<b>0.00%</b>	<b>-</b>	<b>0.00%</b>
<b>TOTAL OPERATING EXPENSES</b>	<b>238,875,857</b>	<b>221,857,675</b>	<b>92.88%</b>	<b>236,340,740</b>	<b>224,443,881</b>	<b>94.97%</b>	<b>(2,586,206)</b>	<b>-2.09%</b>
<b>CAPITAL OUTLAY - NON BOND EXPENSES</b>								
Land Improvement	50,000	22,255	44.51%	34,576	25,841	74.74%	(3,586)	-30.23%
Building Alterations	800,000	338,720	42.34%	641,821	-	0.00%	338,720	42.34%
General Equipment	946,262	682,365	72.11%	434,346	219,174	50.46%	463,191	21.65%
Instructional Equipment	1,000,000	77,358	7.74%	278,826	208,659	74.83%	(131,301)	-67.10%
Technology Equipment	1,000,000	857,270	85.73%	172,430	168,286	97.60%	688,984	-11.87%
Student Activity	220,000	151,155	68.71%	161,507	144,293	89.34%	20,633	-20.63%
Vehicles	230,000	84,272	36.64%	149,853	149,853	100.00%	(65,581)	-63.36%
School Buses	1,200,000	1,063,244	88.60%	1,010,196	1,010,196	100.00%	53,048	-11.40%
<b>TOTAL CAPITAL OUTLAY</b>	<b>5,446,262</b>	<b>3,276,639</b>	<b>60.16%</b>	<b>2,883,555</b>	<b>1,926,302</b>	<b>66.80%</b>	<b>1,350,337</b>	<b>-6.64%</b>
<b>2014 BOND ISSUE EXPENDITURES</b>	<b>1,705,162</b>	<b>1,265,812</b>	<b>74.23%</b>	<b>16,001,045</b>	<b>15,467,875</b>	<b>96.67%</b>	<b>(14,202,063)</b>	<b>-22.43%</b>
<b>2018 BOND ISSUE EXPENDITURES</b>	<b>35,000,000</b>	<b>21,405,690</b>	<b>61.16%</b>	<b>5,737,933</b>	<b>3,176,287</b>	<b>0.00%</b>	<b>18,229,403</b>	<b>61.16%</b>
<b>CAPITAL FUND - BUS LEASES</b>	<b>328,981</b>	<b>209,554</b>	<b>63.70%</b>	<b>331,473</b>	<b>211,298</b>	<b>63.75%</b>	<b>(1,744)</b>	<b>-0.05%</b>
<b>DEBT SERVICE - GO BONDS</b>	<b>53,117,783</b>	<b>50,900,426</b>	<b>95.83%</b>	<b>24,162,368</b>	<b>23,112,317</b>	<b>95.65%</b>	<b>27,788,109</b>	<b>0.17%</b>
<b>GRAND TOTAL EXPENSES</b>	<b>334,474,045</b>	<b>298,915,796</b>	<b>89.37%</b>	<b>285,457,114</b>	<b>268,337,960</b>	<b>94.00%</b>	<b>30,577,836</b>	<b>-4.63%</b>

**FOOD SERVICE  
STATEMENT OF INCOME AND EXPENSE  
May 31, 2020**

		<u>BUDGET FY20</u>	<u>CURRENT MONTH</u>	<u>ACTUAL EXPENDITURES YTD 5/31/2020</u>	<u>% EXPENDED</u>	<u>PRIOR YEAR ACTUAL FY19</u>	<u>PRIOR YEAR TO DATE May 2019</u>	<u>PRIOR YEAR % EXPENDED</u>
<b>RESERVE FOOD SERVICE SURPLUS</b>	-90.6%		(\$280,835)	\$34,233		\$108,211	\$362,630	
<b>INCOME</b>								
<b>LOCAL</b>	929.3%	4,070,811	\$307	\$3,331,179	81.83%	\$4,016,922	\$323,620	8.06%
<b>STATE</b>	643.6%	38,039	\$176	\$16,133	42.41%	\$37,871	\$2,170	5.73%
<b>FEDERAL</b>	647.6%	2,112,600	\$44,659	\$1,481,696	70.14%	\$2,108,406	\$198,182	9.40%
<b>TOTAL INCOME</b>	821.6%	6,221,450	\$45,142	\$4,829,009	77.62%	\$6,163,199	\$523,972	8.50%
<b>COST OF GOODS SOLD:</b>								
<b>Beginning Inventory</b>	-47.8%		\$306,943	\$151,400		\$167,832	\$290,157	172.89%
<b>Add: Purchases-Food</b>	1165.6%	3,000,000	\$345	\$1,933,469	64.45%	\$2,377,522	\$152,767	6.43%
<b>Purchases-Other</b>	14339.1%	236,280	\$7,616	\$198,366	83.95%	\$226,148	\$1,374	0.61%
<b>Goods Available</b>	413.9%		\$314,905	\$2,283,236		\$2,771,502	\$444,297	16.03%
<b>Less: Ending Inventory</b>	80.2%		\$286,579	\$286,579		\$151,400	\$158,994	105.02%
<b>TOTAL COST OF GOODS</b>	599.8%	3,236,280	\$28,326	\$1,996,657	61.70%	\$2,620,102	\$285,303	10.89%
<b>GROSS MARGIN</b>	1086.7%	\$2,985,170	\$16,817	\$2,832,352	94.88%	\$3,543,097	\$238,668	6.74%
<b>OPERATION COSTS:</b>								
<b>Salaries</b>	865.7%	2,144,495	\$222,485	\$2,162,673	100.85%	\$2,361,181	\$223,957	9.48%
<b>Fringe Benefits</b>	930.8%	1,227,870	\$107,984	\$1,103,546	89.87%	\$1,211,028	\$107,057	8.84%
<b>Purchased Services</b>	1614.1%	91,716	\$1,202	\$82,020	89.43%	\$83,704	\$4,785	5.72%
<b>Operating Supplies</b>	2273.5%	68,955	\$761	\$40,944	59.38%	\$77,766	\$1,725	2.22%
<b>Credit for Services</b>	376.9%	(100,000)	(\$1,373)	(\$102,653)	102.65%	(\$118,757)	(\$21,527)	18.13%
<b>Total Operating Costs</b>	940.1%	3,433,036	\$331,059	\$3,286,531	95.73%	\$3,614,922	\$315,997	8.74%
<b>INCOME (LOSS) FROM OPERATIONS</b>	487.3%	(447,866)	(\$314,243)	(\$454,179)		(\$71,825)	(\$77,329)	107.66%
<b>EQUIPMENT</b>		200,000	\$0	\$175,132	87.57%	\$2,153	\$0	0.00%
<b>RESERVE FOOD SERVICE SURPLUS</b>	-308.6%		(\$595,078)	(\$595,078)		\$34,233	\$285,301	833.41%

**Parkway School District  
Building Location Recap Report**

Fiscal Year 2020 Through Period 11    Run Date: 06-04-2020 @ 15:34:19

	<b>Budget</b>	<b>Expended</b>	<b>Encumbrances</b>	<b>Unexpended</b>
FERN RIDGE HIGH	16,400.00	10,107.76	1,388.01	4,904.23
CENTRAL HIGH	384,640.00	227,384.63	10,032.06	147,223.31
NORTH HIGH	288,229.00	179,207.81	28,853.26	80,167.93
WEST HIGH	323,928.00	239,185.27	38,048.09	46,694.64
SOUTH HIGH	488,728.00	274,682.53	17,408.69	196,636.78
SOUTHWEST MIDDLE	127,823.00	90,099.59	73.70	37,649.71
CENTRAL MIDDLE	202,036.00	115,056.39	4,202.28	82,777.33
NORTHEAST MIDDLE	163,283.00	97,774.00	3,776.88	61,732.12
SOUTH MIDDLE	137,365.00	50,473.36	5,941.41	80,950.23
WEST MIDDLE	203,650.00	136,872.53	11,281.27	55,496.20
BARRETS ELEM.	72,791.00	37,530.80	1,002.74	34,257.46
BELLERIVE ELEM.	72,633.00	39,338.05	7,716.29	25,578.66
CARMAN TRAILS ELEM.	76,593.00	45,310.45	4,146.50	27,136.05
CLAYMONT ELEM.	72,898.00	50,985.09	10,089.00	11,823.91
CRAIG ELEM.	69,523.00	56,384.75	7,072.71	6,065.54
GREEN TRAILS ELEM.	60,482.00	31,911.78	344.23	28,225.99
HANNA WOODS ELEM.	64,833.00	58,819.58	1,755.37	4,258.05
HENRY ELEM.	118,736.00	78,199.60	16,649.07	23,887.33
HIGHCROFT ELEM.	60,141.00	41,731.35	3,227.72	15,181.93
MASON RIDGE ELEM.	74,493.00	43,053.22	555.50	30,884.28
MCKELVEY INTERMEDIATE	124,803.00	61,430.17	1,198.85	62,173.98
OAK BROOK ELEM.	86,474.00	61,882.51	2,159.93	22,431.56
PIERREMONT ELEM.	92,890.00	52,423.01	381.32	40,085.67
RIVER BEND ELEM.	69,354.00	52,961.60	226.61	16,165.79
ROSS ELEM.	55,944.00	38,872.76	0.00	17,071.24
SORRENTO SPRINGS ELEM.	50,579.00	26,711.56	1,711.98	22,155.46
SHENANDOAH VALLEY ELEM.	93,811.00	62,993.76	4,761.61	26,055.63
WREN HOLLOW ELEM.	65,925.00	53,538.33	3,282.77	9,103.90
<b>Grand Total for Funds 10-12</b>	<b>3,632,511.00</b>	<b>2,215,227.24</b>	<b>153,179.94</b>	<b>1,264,103.82</b>
<b>Grand Total for Fund 20</b>	<b>3,203.00</b>	<b>4,943.24</b>	<b>0.00</b>	<b>-1,740.24</b>
<b>Grand Total for Fund 30</b>	<b>0.00</b>	<b>0.00</b>	<b>0.00</b>	<b>0.00</b>
<b>Grand Total for Funds 40-41</b>	<b>83,271.00</b>	<b>94,751.76</b>	<b>34,107.91</b>	<b>-45,588.67</b>
<b>Grand Total All</b>	<b>3,718,985.00</b>	<b>2,314,922.24</b>	<b>187,287.85</b>	<b>1,216,774.91</b>

**Parkway School District  
Consolidated Budget - Programs Recap Report**

Fiscal Year 2020 Through Period 11    Run Date: 06-04-2020 @ 15:35:28

	<b>Budget</b>	<b>Expended</b>	<b>Encumbrances</b>	<b>Unexpended</b>
<b>SPECIAL READING</b>	16,064.00	14,110.42	1,240.94	712.64
<b>COMM ARTS</b>	227,532.00	116,754.94	2,013.07	108,763.99
<b>MATHEMATICS</b>	88,228.00	56,848.72	339.82	31,039.46
<b>FINE ARTS</b>	397,680.00	289,930.56	25,678.67	82,070.77
<b>PHYSICAL EDUCATION</b>	62,812.00	45,303.71	3,361.79	14,146.50
<b>SCIENCE</b>	123,993.00	79,943.42	2,747.08	41,302.50
<b>SOCIAL STUDIES</b>	120,154.00	74,906.30	40.05	45,207.65
<b>INSTRUCTIONAL TECHNOLOGY</b>	105,887.00	70,017.52	2,673.85	33,195.63
<b>GUIDANCE</b>	30,128.00	17,464.73	9,028.80	3,634.47
<b>ART</b>	141,339.00	118,234.29	5,064.05	18,040.66
<b>BLDG ADMIN SERVICES</b>	2,160,307.00	1,241,547.05	105,168.03	813,591.92
<b>AUDIO VISUAL SERVICES</b>	8,890.00	4,682.06	196.73	4,011.21
<b>BUSINESS EDUCATION</b>	48,322.00	24,448.41	0.00	23,873.59
<b>MODERN CLASSICAL LANG</b>	49,254.00	35,731.15	0.00	13,522.85
<b>FAMILY AND CONSUMER SC</b>	73,412.00	41,930.43	0.00	31,481.57
<b>INDUSTRIAL ARTS</b>	55,023.00	44,636.43	0.00	10,386.57
<b>STUDENT BODY ACT</b>	247,949.00	180,507.52	48,846.39	18,595.09
<b>COOP VOC ED</b>	285,119.00	105,082.67	114,957.72	65,078.61
<b>UNIFIED STUDIES</b>	2,580.00	2,443.35	0.00	136.65
<b>SPEECH</b>	24,613.00	17,374.62	2,631.28	4,607.10
<b>LIBRARY SVCS</b>	84,634.00	46,329.44	809.58	37,494.98
<b>HEALTH ED</b>	8,368.00	3,817.00	0.00	4,551.00
<b>EEE CAMP</b>	143,238.00	109,876.91	689.04	32,672.05
<b>GIFTED EDUCATION</b>	218,599.00	190,198.75	0.00	28,400.25
<b>DRUG FREE SCHOOL</b>	134,777.00	130,928.56	0.00	3,848.44
<b>SUB RELEASE DAYS</b>	1,000.00	0.00	0.00	1,000.00
<b>ADC</b>	764,833.00	766,494.72	1,232.16	-2,893.88
<b>SUMMER SCHOOL</b>	1,509,408.00	124,437.64	14,700.00	1,370,270.36
<b>INSTRUCTIONAL STAFFING</b>	136,195,592.00	133,426,913.15	0.00	2,768,678.85
<b>BLDG LEVEL STAFFING</b>	17,079,372.00	15,316,807.58	0.00	1,762,564.42
<b>SPECIAL SERVICES</b>	411,258.00	288,572.54	420.80	122,264.66
<b>ESOL</b>	27,305.00	25,321.10	0.00	1,983.90
<b>ATHLETICS</b>	1,850,022.00	1,298,013.00	310,205.75	241,803.25
<b>ADULT BASIC EDUCATION</b>	1,698,775.00	1,348,809.90	19,640.37	330,324.73
<b>SWIM CLUB</b>	819,060.00	569,103.99	25,692.20	224,263.81
<b>EARLY CHILDHOOD</b>	1,786,490.00	1,619,625.66	3,005.13	163,859.21
<b>PRESCHOOLS</b>	2,351,726.00	2,260,774.42	39.53	90,912.05
<b>PARK ROCK COMM ED</b>	38,065.00	33,564.96	0.00	4,500.04

**Parkway School District  
Consolidated Budget - Programs Recap Report**

Fiscal Year 2020 Through Period 11    Run Date: 06-04-2020 @ 15:35:28

	<b>Budget</b>	<b>Expended</b>	<b>Encumbrances</b>	<b>Unexpended</b>
<b>STUDENT SERVICES</b>	137,614.00	178,152.83	0.00	-40,538.83
<b>PUPIL PERSONNEL</b>	2,106,091.00	1,927,395.54	58,340.06	120,355.40
<b>HEALTH SERVICES</b>	2,928,845.00	2,685,521.78	54,967.88	188,355.34
<b>GUIDANCE AND COUNSELING</b>	214,773.00	180,630.32	1,100.00	33,042.68
<b>SEB SUPPORT</b>	77,671.00	45,521.42	0.00	32,149.58
<b>TEACH LEARN ACCOUNTABILITY</b>	4,271,988.00	3,329,029.11	393,336.49	549,622.40
<b>PROFESSIONAL LEARNING</b>	1,373,762.00	745,710.19	15,705.00	612,346.81
<b>READING DIAGNOSTICS</b>	255,699.00	152,907.70	2,000.00	100,791.30
<b>EVALUATION</b>	271,913.00	250,427.66	286.72	21,198.62
<b>INSTRUC TECH LIBRARY MEDIA</b>	1,168,077.00	1,079,921.74	43,361.82	44,793.44
<b>STUDENT ASSESSMENT</b>	348,742.00	167,131.44	63,765.00	117,845.56
<b>PROGRESS MONITORING</b>	537,174.00	290,925.54	0.00	246,248.46
<b>BOARD OF EDUCATION</b>	167,894.00	30,286.59	0.00	137,607.41
<b>SUPERINTENDENT</b>	502,126.00	419,414.40	0.00	82,711.60
<b>DISTRICT DUES</b>	164,700.00	163,001.61	0.00	1,698.39
<b>LEGAL SERVICES</b>	215,000.00	176,271.88	16,342.86	22,385.26
<b>DEPUTY SUPERINTENDENT</b>	410,479.00	286,764.06	0.00	123,714.94
<b>ASST SUPER OF STUDENT SERVICES</b>	316,745.00	245,451.10	63.61	71,230.29
<b>CHIEF FINANCIAL OFFICER</b>	326,659.00	303,991.27	154.49	22,513.24
<b>COMMUNICATIONS</b>	1,072,382.00	899,554.66	11,194.54	161,632.80
<b>SAFETY SECURITY</b>	1,425,675.00	946,795.40	241,722.92	237,156.68
<b>SPECIAL PROJECTS</b>	204,854.00	72,412.20	0.00	132,441.80
<b>FINANCE</b>	1,190,495.00	997,862.57	2,978.19	189,654.24
<b>INTERNAL EQUIP FIN</b>	756,807.00	330,174.47	193,184.26	233,448.27
<b>RISK MGMT</b>	2,347,095.00	1,988,527.81	15,953.02	342,614.17
<b>FOOD SERVICES</b>	7,056,226.00	5,593,498.39	883,724.86	579,002.75
<b>PURCHASING</b>	1,118,292.00	1,106,659.55	424.86	11,207.59
<b>PRINT SHOP</b>	33,465.00	32,123.82	4,601.83	-3,260.65
<b>SCHOOL STORES</b>	394,840.00	297,753.64	0.00	97,086.36
<b>WAREHOUSE</b>	1,019,159.00	717,180.23	2,281.53	299,697.24
<b>MAILROOM</b>	92,600.00	64,689.23	2,089.30	25,821.47
<b>TECHNOLOGY</b>	7,317,565.00	6,402,766.98	78,068.94	836,729.08
<b>HUMAN RESOURCES</b>	1,195,151.00	1,000,395.58	8,324.70	186,430.72
<b>TRANSPORTATION</b>	7,645,861.00	6,569,744.51	545,455.20	530,661.29
<b>SSD TRANSPORTATION</b>	2,091,374.00	1,967,993.29	0.00	123,380.71
<b>STUDENTS IN TRANSITION</b>	1,300,000.00	931,080.53	298,516.04	70,403.43
<b>FACILITY OPERATIONS</b>	8,534,797.00	6,804,822.15	87,095.32	1,642,879.53
<b>FACILITY MAINTENANCE</b>	5,172,485.00	4,273,801.10	647,588.09	251,095.81



**Parkway School District  
Consolidated Budget - Programs Recap Report**

Fiscal Year 2020 Through Period 11    Run Date: 06-04-2020 @ 15:35:28

	<b>Budget</b>	<b>Expended</b>	<b>Encumbrances</b>	<b>Unexpended</b>
<b>GROUNDS MAINTENANCE</b>	2,099,060.00	1,509,163.24	343,824.36	246,072.40
<b>PLANNING</b>	1,769,472.00	1,144,675.75	86,421.06	538,375.19
<b>ENVIRONMENTAL SVCS</b>	739,728.00	359,772.09	73,155.80	306,800.11
<b>FACILITY MANAGEMENT</b>	936,054.00	570,749.90	263,139.76	102,164.34
<b>SUSTAINABILITY</b>	5,102,810.00	3,424,925.53	1,286,774.84	391,109.63
<b>REBATE PROJECTS</b>	374,159.00	190,127.25	116,358.11	67,673.64
<b>2014 BOND</b>	3,000,000.00	1,272,708.71	318,050.22	1,409,241.07
<b>2018 BOND</b>	35,000,000.00	21,405,690.29	12,576,208.69	1,018,101.02
<b>DEBT SERVICE</b>	50,474,423.00	50,900,425.70	2,806.47	-428,809.17
<b>STATE GRANTS</b>	217,219.00	308,526.63	0.00	-91,307.63
<b>FEDERAL GRANTS</b>	1,714,924.41	1,551,259.36	47,738.12	115,926.93
<b>LOCAL GRANTS</b>	120,991.69	110,967.45	0.00	10,024.24
<b>Grand Total for Funds 10-12</b>	<b>87,197,189.70</b>	<b>68,988,696.57</b>	<b>5,594,102.87</b>	<b>12,614,390.26</b>
<b>Grand Total for Fund 20</b>	<b>155,650,215.40</b>	<b>150,651,109.82</b>	<b>0.00</b>	<b>4,999,105.58</b>
<b>Grand Total for Fund 30</b>	<b>50,474,423.00</b>	<b>50,900,425.70</b>	<b>2,806.47</b>	<b>-428,809.17</b>
<b>Grand Total for Funds 40-41</b>	<b>8,383,896.00</b>	<b>4,600,849.43</b>	<b>1,314,409.76</b>	<b>3,486,737.83</b>
<b>Grand Total All</b>	<b>336,705,724.10</b>	<b>296,546,771.81</b>	<b>19,487,527.79</b>	<b>20,671,424.50</b>

**Parkway School District  
Program Budget - Programs Recap Report**

Fiscal Year 2020 Through Period 11    Run Date: 06-04-2020 @ 15:36:20

	<b>Budget</b>	<b>Expended</b>	<b>Encumbrances</b>	<b>NKNOWN</b>	<b>Unexpended</b>
<b>SPECIAL READING</b>	5,770.00	3,581.58	730.00	0.00	1,458.42
<b>COMM ARTS</b>	147,220.00	62,157.30	0.00	0.00	85,062.70
<b>MATHEMATICS</b>	68,259.00	49,480.98	339.82	0.00	18,438.20
<b>FINE ARTS</b>	373,144.00	273,063.66	23,257.28	87.47	76,823.06
<b>PHYSICAL EDUCATION</b>	43,481.00	28,937.55	211.16	0.00	14,332.29
<b>SCIENCE</b>	110,876.00	73,560.39	2,747.08	0.00	34,568.53
<b>SOCIAL STUDIES</b>	99,860.00	46,207.65	0.00	0.00	53,652.35
<b>INSTRUCTIONAL TECHNOLOGY</b>	52,832.00	31,921.72	2,388.00	0.00	18,522.28
<b>GUIDANCE</b>	23,112.00	11,394.48	9,028.80	0.00	2,688.72
<b>ART</b>	90,789.00	71,093.06	3,513.73	0.00	16,182.21
<b>BLDG ADMIN SERVICES</b>	1,403,328.00	750,374.28	72,367.99	0.00	580,585.73
<b>AUDIO VISUAL SERVICES</b>	8,590.00	4,682.06	196.73	0.00	3,711.21
<b>BUSINESS EDUCATION</b>	48,322.00	24,448.41	0.00	0.00	23,873.59
<b>MODERN CLASSICAL LANG</b>	49,254.00	35,731.15	0.00	0.00	13,522.85
<b>FAMILY AND CONSUMER SC</b>	73,412.00	41,930.43	0.00	0.00	31,481.57
<b>INDUSTRIAL ARTS</b>	55,023.00	44,636.43	0.00	0.00	10,386.57
<b>STUDENT BODY ACT</b>	247,949.00	180,507.52	48,846.39	0.00	18,595.09
<b>COOP VOC ED</b>	285,119.00	105,082.67	114,957.72	0.00	65,078.61
<b>UNIFIED STUDIES</b>	2,580.00	2,443.35	0.00	0.00	136.65
<b>SPEECH</b>	24,613.00	17,374.62	2,631.28	0.00	4,607.10
<b>LIBRARY SVCS</b>	63,196.00	34,782.29	254.20	0.00	28,159.51
<b>HEALTH ED</b>	7,351.00	3,592.39	0.00	0.00	3,758.61
<b>EEE CAMP</b>	143,238.00	109,964.38	689.04	-87.47	32,584.58
<b>GIFTED EDUCATION</b>	209,819.00	182,758.63	0.00	0.00	27,060.37
<b>DRUG FREE SCHOOL</b>	134,777.00	130,928.56	0.00	0.00	3,848.44
<b>ADC</b>	0.00	48.00	0.00	0.00	-48.00
<b>SUMMER SCHOOL</b>	0.00	510.00	0.00	0.00	-510.00
<b>INSTRUCTIONAL STAFFING</b>	129,680,808.00	129,985,051.45	0.00	152,043.39	-304,243.45
<b>BLDG LEVEL STAFFING</b>	16,570,109.00	14,922,209.08	0.00	0.00	1,647,899.92
<b>SPECIAL SERVICES</b>	7,547.00	5,520.96	267.80	0.00	1,758.24
<b>ESOL</b>	1,601.00	19,960.37	0.00	0.00	-18,359.37
<b>ATHLETICS</b>	76,169.00	437,824.04	22,740.88	0.00	-384,395.92
<b>PARK ROCK COMM ED</b>	0.00	12,496.18	0.00	0.00	-12,496.18
<b>PUPIL PERSONNEL</b>	565,730.00	597,645.18	0.00	0.00	-31,915.18
<b>HEALTH SERVICES</b>	2,105,055.00	2,091,043.74	0.00	0.00	14,011.26
<b>GUIDANCE AND COUNSELING</b>	14,397.00	20,470.11	0.00	0.00	-6,073.11

**Parkway School District  
Program Budget - Programs Recap Report**

Fiscal Year 2020 Through Period 11    Run Date: 06-04-2020 @ 15:36:20

	<b>Budget</b>	<b>Expended</b>	<b>Encumbrances</b>	<b>NKNOWN</b>	<b>Unexpended</b>
<b>TEACH LEARN ACCOUNTABILITY</b>	0.00	552,105.75	387,685.55	0.00	-939,791.30
<b>PROFESSIONAL LEARNING</b>	0.00	159,573.76	0.00	0.00	-159,573.76
<b>READING DIAGNOSTICS</b>	0.00	5,014.28	0.00	0.00	-5,014.28
<b>INSTRUC TECH LIBRARY MEDIA</b>	0.00	267,570.75	41,783.99	0.00	-309,354.74
<b>STUDENT ASSESSMENT</b>	0.00	3,928.00	0.00	0.00	-3,928.00
<b>SAFETY SECURITY</b>	6,752.00	7,587.72	0.00	0.00	-835.72
<b>FOOD SERVICES</b>	2,956,868.00	2,678,373.52	0.00	0.00	278,494.48
<b>SCHOOL STORES</b>	22,000.00	16,380.10	0.00	0.00	5,619.90
<b>TECHNOLOGY</b>	1,262,135.00	1,897,703.41	0.00	0.00	-635,568.41
<b>FACILITY OPERATIONS</b>	6,284,342.00	5,033,380.24	0.00	0.00	1,250,961.76
<b>PLANNING</b>	0.00	9,877.90	0.00	0.00	-9,877.90
<b>SUSTAINABLITY</b>	0.00	2,849,747.70	54,810.00	0.00	-2,904,557.70
<b>2014 BOND</b>	0.00	284,350.76	91,573.44	0.00	-375,924.20
<b>2018 BOND</b>	0.00	9,484,734.12	8,282,341.72	0.00	-17,767,075.84
<b>FEDERAL GRANTS</b>	977,962.23	1,404,695.38	2,600.00	-152,043.39	-429,333.15
<b>LOCAL GRANTS</b>	0.00	239.40	0.00	0.00	-239.40
<b>Grand Total for Funds 10-12</b>	<b>25,335,057.83</b>	<b>25,927,184.00</b>	<b>760,608.44</b>	<b>0.00</b>	<b>-1,352,734.61</b>
<b>Grand Total for Fund 20</b>	<b>138,903,777.40</b>	<b>138,870,102.79</b>	<b>0.00</b>	<b>0.00</b>	<b>33,674.61</b>
<b>Grand Total for Fund 30</b>	<b>0.00</b>	<b>0.00</b>	<b>0.00</b>	<b>0.00</b>	<b>0.00</b>
<b>Grand Total for Funds 40-41</b>	<b>64,554.00</b>	<b>786,656.53</b>	<b>123,012.44</b>	<b>0.00</b>	<b>-18,612,190.81</b>
<b>Grand Total All</b>	<b>164,303,389.23</b>	<b>175,068,677.44</b>	<b>9,165,962.60</b>	<b>0.00</b>	<b>-19,931,250.81</b>

• **GLOSSARY**

ACCOUNTS PAYABLE - Unpaid amounts currently owed to vendors for goods and services provided.

ACCOUNTS RECEIVABLE - Revenues earned but not yet received by the District.

AMOUNT PROVIDED FOR BOND PRINCIPAL - Amount available to meet current and future bond payments.

AMOUNT TO BE PROVIDED FOR PRINCIPAL AND INTEREST - The amount of funds needed to repay remaining bonded indebtedness. This is a “memo type” entry and does not represent an actual accumulation of cash.

BONDS AND INTEREST PAYABLE - CURRENT - Amount of bond principal and interest payable in future years.

CONSTRUCTION IN PROGRESS - Amounts expended to date on construction projects not completed. When completed, this account is reduced by the total cost of the completed projects.

ENCUMBRANCES - Obligations in the form of purchase orders, contracts, salary commitments, etc. for which a budgeted appropriation has been made.

EQUITY IN GENERAL FIXED ASSETS - Represents the appropriation of funds over a number of years to acquire land, buildings / improvements, and equipment. It is an offset to the respective asset accounts.

FUND BALANCE - The excess of assets over liabilities, which represent the “net worth” of a fund.

FUNDS - The four basic funds and their purposes are:

Capital Projects (Building) - Only capital equipment and building additions / alterations can be charged to this fund. Primary sources of revenue are property / delinquent taxes, building leases, investment income and sale of bonds.

Debt Service - Bond principal, interest and fees associated with the issue and redemption of bonds are the only expenses chargeable to this fund. Primary sources of revenue are property / delinquent taxes and investment income.

General (Incidental) - Expenses not specifically chargeable to other funds are charged to this fund. Primary sources of revenue are property / delinquent taxes, sales tax, investment income, minimum guarantee, VST, textbook, transportation and food service.

Special Revenue (Teachers) - Only salaries for certificated personnel and the cost medical / dental / vision / life insurance can be charged to this fund. Primary sources of revenue are property / delinquent taxes, investment income, state utility tax, minimum guarantee and VST.

INVENTORIES - Value of consumables purchased for future use.

PREPAID EXPENSES - Services paid for in advance of use (e.g. insurance).

RESERVE - Portion of the fund balance which is segregated for a future use and, therefore, not available for future appropriation.

RESERVE FOR BUDGETED ENCUMBRANCE - Funds budgeted and encumbered but not yet spent.

RESTRICTED RESERVE - Balances in the General Fund or Capital Projects Fund restricted as to the use (e.g. future medical / dental benefits) or unspent bond issue funds.

UNREALIZED REVENUES - Revenues budgeted but not yet realized.

UNSPENT BUDGETED FUNDS - Funds budgeted but not expended or encumbered.



## FOR MONTH OF: MAY – FY20

Attached is a list (alphabetical by vendor) of purchase orders and order for payments \$500 to \$15,000 and \$15,000 + which the administration has approved in accordance with Policy #DJEBP

Reports per DIC.BP

c: Patty Bedborough, Brian Whittle, Erik Lueders

ORDER FOR PAYMENT

\$500 - \$15,000

APRIL FY20

VENDOR NAME	OBJECT	DOCUMENT	AMOUNT	WARRANT	CHECK #	INVOICE
AMZN Mktp US*N51RE2W	6412	412949	\$ 538.95		0	114-8025590-8654609
ANGEL AUDIO	6319	411684	\$ 500.00	REG	502332	727
AT&T MOBILITY	6361	412090	\$ 1,545.82		0	412090
AT&T MOBILITY	6361	412091	\$ 1,983.88		0	412091
BURLINGTON ENGLISH I	6412	412936	\$ 1,224.00		0	412936
CHAPMAN PROMOTIONS &	6411	410751	\$ 939.77	REG	502039	1174
CONFLUENCE ACADEMY	6342	411995	\$ 1,275.00	REG	502340	0115020218
CONFLUENCE ACADEMY	6342	411998	\$ 1,588.00	REG	502340	0205030218
CONFLUENCE ACADEMY	6342	411999	\$ 1,875.00	REG	502340	0305032318
CONFLUENCE ACADEMY	6342	412001	\$ 2,082.00	REG	502340	0402042318
DIGICERT, INC	6412	412456	\$ 1,307.00		0	412456
EDUCATIONPLUS	6319	412388	\$ 600.00		0	412388
FASTSIGNS OF CREVE C	6363	412366	\$ 680.00		0	412366
FASTSIGNS OF CREVE C	6363	412363	\$ 1,088.00		0	412363
GRAYBAR ELEC CO	6412	412458	\$ 1,003.40		0	412458
HOLLOWAY, RICHARD B.	5122	411399	\$ 1,538.90	EARLY	501995	REFUND SS X2 HOLLOWA
INBIA	6371	412478	\$ 525.00	REG	502348	60318
JOSTENS INC	6411	410943	\$ 975.00	052120	5594	24385642
JUDD, CAROLINE	6312	411605	\$ 500.00	REG	502226	111
METROPOLITAN SEWER D	6335	412062	\$ 521.36		0	412062
METROPOLITAN SEWER D	6335	412068	\$ 584.67		0	412068
METROPOLITAN SEWER D	6335	412071	\$ 701.55		0	412071
METROPOLITAN SEWER D	6335	412075	\$ 1,022.97		0	412075
METROPOLITAN SEWER D	6335	412057	\$ 2,021.32		0	412057
METROPOLITAN SEWER D	6335	412078	\$ 3,996.79		0	412078
MISSOURI AMERICAN WA	6335	412404	\$ 561.12		0	412404
MISSOURI AMERICAN WA	6335	412450	\$ 570.37		0	412450
MISSOURI AMERICAN WA	6335	412436	\$ 594.30		0	412436
MISSOURI AMERICAN WA	6335	412399	\$ 607.22		0	412399
MISSOURI AMERICAN WA	6335	412437	\$ 821.52		0	412437
MISSOURI AMERICAN WA	6335	412449	\$ 862.14		0	412449
MISSOURI AMERICAN WA	6335	412417	\$ 902.86		0	412417
MISSOURI AMERICAN WA	6335	412402	\$ 1,001.95		0	412402
MISSOURI AMERICAN WA	6335	412403	\$ 1,001.95		0	412403
MISSOURI AMERICAN WA	6335	412405	\$ 1,001.95		0	412405
MISSOURI AMERICAN WA	6335	412407	\$ 1,001.95		0	412407
MISSOURI AMERICAN WA	6335	412408	\$ 1,001.95		0	412408
MISSOURI AMERICAN WA	6335	412409	\$ 1,001.95		0	412409
MISSOURI AMERICAN WA	6335	412412	\$ 1,001.95		0	412412
MISSOURI AMERICAN WA	6335	412442	\$ 1,001.95		0	412442
MISSOURI AMERICAN WA	6335	412448	\$ 1,001.95		0	412448
MISSOURI AMERICAN WA	6335	412451	\$ 1,001.95		0	412451
MORRIS, DAWN	5122	410605	\$ 635.00	EARLY	501645	REFUND SS MORRIS
OAKWOOD SYSTEMS GROU	6316	411992	\$ 1,860.00	REG	502236	000059045
OLIVER, MADELINE	6312	411451	\$ 506.00	REG	502065	MOLIVER-NEM
PAYPAL *EDUCATIONRO	6391	412602	\$ 1,437.00		0	412602
PEARLMAN, BRAD	5122	410603	\$ 1,050.00	EARLY	501659	REFUND SS PEARLMAN
PROJECT LEAD THE WAY	6319	412390	\$ 750.00		0	412390
PROJECT LEAD THE WAY	6319	412391	\$ 750.00		0	412391
PROJECT LEAD THE WAY	6319	412392	\$ 750.00		0	412392
PROJECT LEAD THE WAY	6319	412389	\$ 1,200.00		0	412389
PROJECT LEAD THE WAY	6319	412937	\$ 1,200.00		0	412937
PROJECT LEAD THE WAY	6319	412938	\$ 1,200.00		0	412938
SCHAEFER SIGNS	6411	410971	\$ 799.50	REG	502240	7713

<b>VENDOR NAME</b>	<b>OBJECT</b>	<b>DOCUMENT</b>	<b>AMOUNT</b>	<b>WARRANT</b>	<b>CHECK #</b>	<b>INVOICE</b>
SNO SITES	6398	410783	\$ 940.00	051420	5583	30131
ST. LOUIS FOOD BANK	6411	411715	\$ 3,068.20	EARLY	502324	AOR87003-1
TYLER BUSINESS FORMS	6391	412039	\$ 740.75		0	412039
UNIV. OF MISSOUR	6411	410823	\$ 2,500.00	EARLY	502026	SWAIN SCHOLARSHIP
USPS PO 2814830617	6361	412040	\$ 671.00		0	412040
UTC CONTINUING EDUCA	6319	412055	\$ 525.00		0	412055
VARSITY SPIRIT FASHI	6411	410907	\$ 953.64	EARLY	502028	905321174-REISSUE
VERIZON WIRELESS	6361	412093	\$ 749.70		0	412093
VERIZON WIRELESS	6361	412093	\$ 3,343.97		0	412093
WINNING STREAK	6411	412100	\$ 1,092.45		0	412100
WOLFERSBURGER, SARAH	5122	410953	\$ 700.00	EARLY	501882	REFUND SS WOLFERSBUR
WWW.WALTON* 2020 WAL	6319	412054	\$ 700.00		0	412054
		<b>TOTAL:</b>	<b>\$ 73,679.62</b>			



**PURCHASE ORDERS**  
**\$500 - \$15,000**  
**MAY FY20**

<b>PO#</b>	<b>Vendor Name</b>	<b>PO Date</b>	<b>Order Amount</b>	<b>Balance</b>	<b>Status</b>	<b>1st GL Account</b>
43200034	AMERICAN CARNIVAL MART	05/22/2020	\$ 1,867.00	\$ 1,867.00	8 - Printed	10.1131.111.3080.641
85200418	BROCK HOLDINGS III, INC.	05/12/2020	\$ 9,380.30	\$ -	0 - Closed	10.0000.000.0000.215
83200151	BUNCREE LLC	05/01/2020	\$ 4,100.00	\$ -	0 - Closed	10.2222.355.0075.641
85200427	CATCO	05/27/2020	\$ 5,368.56	\$ -	0 - Closed	10.0000.000.0000.215
2200072	COMMITTEE FOR CHILDREN	05/12/2020	\$ 9,028.80	\$ 9,028.80	8 - Printed	10.1111.109.4040.641
63200318	DELL MARKETING EDUCATIONAL SALES	05/12/2020	\$ 1,189.17	\$ 1,189.17	8 - Printed	10.2331.510.0070.641
48200187	DH PACE COMPANY	05/26/2020	\$ 1,014.00	\$ 1,014.00	8 - Printed	48.4051.618.0075.652
85200423	F J JURCIC CO	05/22/2020	\$ 2,000.00	\$ -	0 - Closed	10.2542.554.0085.631
85200424	F J JURCIC CO	05/22/2020	\$ 3,000.00	\$ -	0 - Closed	10.2542.554.0085.631
62200331	GATEWAY EDUCATION HOLDINGS LLC	05/18/2020	\$ 3,208.07	\$ 3,208.07	8 - Printed	10.1151.351.1075.641
62200332	GATEWAY EDUCATION HOLDINGS LLC	05/18/2020	\$ 10,111.12	\$ 10,111.12	8 - Printed	10.1151.351.1050.641
62200336	GATEWAY EDUCATION HOLDINGS LLC	05/27/2020	\$ 10,879.96	\$ 10,879.96	8 - Printed	10.1151.351.1090.643
58200235	GREATER ST.LOUIS HONOR FLIGHT	05/22/2020	\$ 11,718.00	\$ -	0 - Closed	11.3911.900.1090.639
85200426	HILLYARD	05/26/2020	\$ 6,811.12	\$ 6,811.12	8 - Printed	10.2542.551.0085.641
85200422	HOME SERVICE OIL CO INC	05/22/2020	\$ 880.55	\$ -	0 - Closed	10.2541.556.0085.648
63200321	IMAGE ACCESS CORP	05/18/2020	\$ 7,519.50	\$ -	0 - Closed	10.2114.354.0070.641
62200328	IMAGEMENT CONSULTING	05/18/2020	\$ 14,990.60	\$ -	0 - Closed	40.1371.805.0075.654
62200333	KNOWLEDGE MATTERS, INC	05/27/2020	\$ 2,600.00	\$ 2,600.00	8 - Printed	10.1321.805.1080.641
92200029	NEW READERS PRESS	05/28/2020	\$ 2,048.00	\$ 2,048.00	8 - Printed	10.1611.205.0075.643
92200028	NEW READERS PRESS	05/28/2020	\$ 2,444.80	\$ 2,444.80	8 - Printed	10.1611.205.0075.643
92200027	OFFICE ESSENTIALS INCORPORATED	05/28/2020	\$ 1,000.00	\$ 1,000.00	8 - Printed	10.1611.205.0075.641
48200176	OFFICE ESSENTIALS INCORPORATED	05/07/2020	\$ 3,400.00	\$ 3,400.00	8 - Printed	48.4051.618.4110.652
41200022	OFFICE ESSENTIALS INCORPORATED	05/12/2020	\$ 3,873.78	\$ 3,873.78	8 - Printed	10.2411.111.3060.641
15200034	OFFICE ESSENTIALS INCORPORATED	05/12/2020	\$ 6,554.86	\$ 6,554.86	8 - Printed	10.1111.111.4030.641
85200420	PROFESSIONAL SERVICE INDUSTRIES	05/18/2020	\$ 3,800.40	\$ -	0 - Closed	10.0000.000.0000.215
85200417	RAINERI CONSTRUCTION	05/07/2020	\$ 1,400.00	\$ -	0 - Closed	10.2542.554.0085.631
73200067	RIDDELL ALL AMERICAN	05/22/2020	\$ 12,650.83	\$ 12,650.83	8 - Printed	10.1421.204.0075.641
97200129	RUSH TRUCK CENTERS OF MISSOURI INC.	05/18/2020	\$ 14,500.00	\$ 4,510.40	8 - Printed	10.2552.512.0080.641
63200316	SCHILLER'S IMAGING CO.	05/01/2020	\$ 1,499.00	\$ -	0 - Closed	40.1151.108.1050.654
48200177	SCHILLER'S IMAGING CO.	05/07/2020	\$ 11,970.00	\$ 11,970.00	8 - Printed	48.4051.618.4160.652
54200226	SCHOOL DATEBOOKS	05/22/2020	\$ 1,644.50	\$ 1,644.50	8 - Printed	10.1151.111.1080.641
22200007	SCHOOL SPECIALTY-	05/12/2020	\$ 1,814.60	\$ 1,814.60	8 - Printed	10.2411.111.4130.641
11200025	SHOW ME TEE'S	05/01/2020	\$ 720.00	\$ -	0 - Closed	11.2411.900.4180.641
62200335	SLATE SOLUTIONS, INC	05/27/2020	\$ 4,000.00	\$ -	0 - Closed	10.1321.119.0075.641
41200023	SOUTHWEST BINDING	05/26/2020	\$ 1,375.00	\$ 1,375.00	8 - Printed	40.2411.111.3060.654
48200178	STRAIGHTUP SOLAR, LLC	05/07/2020	\$ 12,060.00	\$ 3,618.00	8 - Printed	48.4051.618.3000.652
45200041	TECHNICAL PRODUCTION	05/05/2020	\$ 2,619.38	\$ -	0 - Closed	10.1131.121.3040.641
85200421	THERMAL MECHANICS, INC.	05/18/2020	\$ 2,660.00	\$ 2,660.00	8 - Printed	10.2542.552.0085.641
97200130	WINDSHIELDS & MORE INC	05/18/2020	\$ 765.00	\$ -	0 - Closed	10.2552.512.0080.641
58200234	WINNING STREAK	05/12/2020	\$ 12,948.00	\$ 12,948.00	8 - Printed	10.1421.117.1090.641
<b>TOTAL:</b>			<b>\$ 211,414.90</b>			

**\$15,000+**  
**MAY FY20**

<b>PO#</b>	<b>Vendor Name</b>	<b>PO Date</b>	<b>Order Amount</b>	<b>Balance</b>	<b>Status</b>	<b>1st GL Account</b>
63200320	APPLE INC.	05/18/2020	\$ 30,147.52	\$ 9,143.04	8 - Printed	40.1351.805.0075.654
61200034	BERNHARD TME, LLC	05/05/2020	\$ 100,000.00	\$ 100,000.00	8 - Printed	10.2542.557.0085.631
48200186	BROCK HOLDINGS III, INC.	05/26/2020	\$ 29,440.00	\$ 29,440.00	8 - Printed	48.4051.618.4160.652
85200419	CATCO	05/18/2020	\$ 21,427.70	\$ -	0 - Closed	10.0000.000.0000.215
85200425	F J JURCIC CO	05/26/2020	\$ 15,000.00	\$ 15,000.00	8 - Printed	10.2542.552.0085.633
48200179	FGM ARCHITECTS INC.	05/08/2020	\$ 52,801.00	\$ 48,840.92	8 - Printed	48.4031.618.4220.652
48200180	FGM ARCHITECTS INC.	05/08/2020	\$ 71,990.00	\$ 66,590.75	8 - Printed	48.4031.618.1050.652
48200185	FGM ARCHITECTS INC.	05/26/2020	\$ 76,921.23	\$ 76,921.23	8 - Printed	48.4031.618.4245.652
48200184	FGM ARCHITECTS INC.	05/22/2020	\$ 133,864.97	\$ 133,864.97	8 - Printed	48.4031.618.3040.652
48200183	FGM ARCHITECTS INC.	05/22/2020	\$ 257,108.25	\$ 257,108.25	8 - Printed	48.4031.618.1050.652
48200181	FLOORING SYSTEMS, INC	05/08/2020	\$ 87,620.00	\$ 43,265.00	8 - Printed	48.4051.618.0085.652
48200182	FLOORING SYSTEMS, INC	05/08/2020	\$ 96,990.00	\$ 21,190.00	8 - Printed	48.4051.618.0085.652
62200330	GATEWAY EDUCATION HOLDINGS LLC	05/18/2020	\$ 15,726.10	\$ 15,726.10	8 - Printed	10.1151.351.1090.641
62200338	GATEWAY EDUCATION HOLDINGS LLC	05/27/2020	\$ 28,737.27	\$ 28,737.27	8 - Printed	10.1151.351.1080.643
62200337	GATEWAY EDUCATION HOLDINGS LLC	05/27/2020	\$ 52,367.67	\$ 52,367.67	8 - Printed	10.1151.351.1075.643
62200327	MACMILLAN HOLDINGS, LLC	05/13/2020	\$ 21,571.78	\$ 21,571.78	8 - Printed	10.1151.351.1050.643
62200334	MACMILLAN HOLDINGS, LLC	05/27/2020	\$ 81,041.96	\$ 81,041.96	8 - Printed	10.1151.351.1075.643
54200225	OFFICE ESSENTIALS INCORPORATED	05/12/2020	\$ 19,723.03	\$ 19,723.03	8 - Printed	10.1151.111.1080.641
32200008	PROFESSIONAL SOFTWARE FOR NURSES, INC.	05/01/2020	\$ 31,200.00	\$ -	0 - Closed	10.2134.303.0075.641
63200319	SCHOOLOGY INC.	05/12/2020	\$ 144,000.00	\$ -	0 - Closed	10.0000.000.0000.170
62200329	W.W. NORTON & CO	05/18/2020	\$ 43,719.98	\$ 43,719.98	8 - Printed	10.1151.351.1050.643
48200175	WOOD ENVIRONMENT & INFRASTRUCTURE SOLUTIONS	05/07/2020	\$ 39,825.00	\$ 39,825.00	8 - Printed	48.4031.618.3040.652
<b>TOTAL:</b>			<b>\$ 1,451,223.46</b>			

**SPOT MARKET REPORT - APRIL FY20**

Purchase Order #	Date	Vendor #	Vendor Name	Comm. Code	QTY	UOM	Unit Price	Description	Object	Account Amt
61200013	07/24/2019	809084	OFFICE ESSENTIALS INCORPORATED	202	840	EACH	\$ 32.68	8.5 x 11 WHITE COPY PAPER - 30% RECYCLED PAPER - UNIVERSAL	1615	\$ 27,451.20
61200013					120	EACH	\$ 32.68	8 1/2" X 11" COPY PAPER - 30% RECYCLED CONTENT - ESSENTIALS BRAND	1615	\$ 3,921.60
61200019	09/03/2019	632285	DUTCH HOLLOW SERVICES & SUPPLIES INC.	202						
61200019					840	EACH	\$ 31.30	8.5 x 11 WHITE COPY PAPER - 30% RECYCLED PAPER - UNIVERSAL #20030	1615	\$ 26,292.00
61200019					80	EACH	\$ 31.30	8.5 x 11 WHITE COPY PAPER - 30% RECYCLED PAPER - UNIVERSAL #20030	1615	\$ 2,504.00
61200026	10/04/2019	632285	DUTCH HOLLOW SERVICES & SUPPLIES INC.	202						
61200026					840	EACH	\$ 31.30	8.5 x 11 WHITE COPY PAPER - 30% RECYCLED PAPER - UNIVERSAL #20030	1615	\$ 26,292.00
61200028	11/12/2019	632285	DUTCH HOLLOW SERVICES & SUPPLIES INC.	202						
61200028					840	EACH	\$ 31.30	8.5 x 11 WHITE COPY PAPER - 30% RECYCLED PAPER - UNIVERSAL #20030	1615	\$ 26,292.00
61200030	01/02/2020	632285	DUTCH HOLLOW SERVICES & SUPPLIES INC.	202						
61200030					840	EACH	\$ 31.29	8.5 x 11 WHITE COPY PAPER - 30% RECYCLED PAPER - UNIVERSAL #20030	1615	\$ 26,283.60
61200033	02/27/2020	632285	DUTCH HOLLOW SERVICES & SUPPLIES INC.	202						
61200033					840	EACH	\$ 31.28	8.5 x 11 WHITE COPY PAPER - 30% RECYCLED P	1615	\$ 26,275.20
85200129	07/30/2019	642477	ENERGY PETROLEUM COMPANY	400	314.5	EACH	\$ 2.25	NO LEAD 87 OCT RFG	6486	\$ 707.63
85200129					1	EACH	\$ 55.10	FEDERAL AND STATE TAXES AND FEES - 6233676	6486	\$ 55.10
85200129					417.4	EACH	\$ 2.13	#2 DIESEL ULTRA LS	6486	\$ 889.06

85200129					1	EACH	\$	73.13	FEDERAL AND STATE TAXES AND FEES - 6233674	6486	\$	73.13
85200157	08/13/2019	642477	ENERGY PETROLEUM COMPANY	400								
85200157					325.4	EACH	\$	2.18	NO LEAD 87 OCT RFG	6486	\$	709.37
85200157												
85200157					1	EACH	\$	57.02	FEDERAL AND STATE TAXES AND FEES - 11741654	6486	\$	57.02
85200157					350.5	EACH	\$	2.20	#2 DIESEL ULTRA LS	6486	\$	771.10
85200157												
85200157					1	EACH	\$	61.42	FEDERAL AND STATE TAXES AND FEES - 11741655	6486	\$	61.42
85200157												
85200158	08/13/2019	642477	ENERGY PETROLEUM COMPANY	400								
85200158					2000	EACH	\$	1.99	NO LEAD 87 OCT RFG	6486	\$	3,980.00
85200158												
85200158					1	EACH	\$	350.40	FEDERAL AND STATE TAXES AND FEES - 6235612	6486	\$	350.40
85200158					250	EACH	\$	2.03	#2 DIESEL ULTRA LS	6486	\$	507.50
85200158												
85200158					1	EACH	\$	43.81	FEDERAL AND STATE TAXES AND FEES - 6235613	6486	\$	43.81
85200158												
85200158					1	EACH	\$	74.47	FEDERAL AND STATE TAXES AND FEES - 6235611	6486	\$	74.47
85200158					425	EACH	\$	1.99	NO LEAD 87 OCT RFG	6486	\$	845.75
85200158												
85200207	08/29/2019	642477	ENERGY PETROLEUM COMPANY	400								
85200207					3980.6	EACH	\$	1.77	NO LEAD 87 OCT RFG	6486	\$	7,045.66
85200207												
85200207					1	EACH	\$	697.40	FEDERAL AND STATE TAXES AND FEES - 6239726	6486	\$	697.40
85200207					298.9	EACH	\$	1.88	#2 DIESEL ULTRA LS	6486	\$	561.93
85200207												
85200207					1	EACH	\$	52.37	FEDERAL AND STATE TAXES AND FEES - 6239727	6486	\$	52.37
85200207					400	EACH	\$	1.77	NO LEAD 87 OCT RFG	6486	\$	708.00
85200207												
85200213	09/05/2019	642477	ENERGY PETROLEUM COMPANY	400								
85200213					1680.2	EACH	\$	1.90	NO LEAD 87 OCT RFG	6486	\$	3,190.70
85200213												

85200213					1	EACH	\$	294.37	FEDERAL AND STATE TAXES AND FEES - 6241920				
85200213										6486	\$	294.37	
85200213					360.2	EACH	\$	1.91	#2 DIESEL ULTRA LS		6486	\$	686.58
85200213													
85200213					1	EACH	\$	63.10	FEDERAL AND STATE TAXES AND FEES - 6241921		6486	\$	63.10
85200213													
85200213					387.8	EACH	\$	1.90	NO LEAD 87 OCT RFG		6486	\$	736.43
85200213													
85200213					1	EACH	\$	67.95	FEDERAL AND STATE TAXES AND FEES - 6241919		6486	\$	67.95
85200213													
85200236	09/26/2019	642477	ENERGY PETROLEUM COMPANY	400									
85200236					1500.1	EACH	\$	1.82	NO LEAD 87 OCT RFG		6486	\$	2,730.18
85200236													
85200236					1	EACH	\$	262.82	FEDERAL AND STATE TAXES AND FEES - 6247716		6486	\$	262.82
85200236					300	EACH	\$	1.91	#2 DIESEL ULTRA LS -6247717		6486	\$	573.00
85200236													
85200236					1	EACH	\$	52.56	FEDERAL AND STATE TAXES AND FEES - 6247717		6486	\$	52.56
85200236					350.4	EACH	\$	1.82	NO LEAD 87 OCT RFG - 6247715		6486	\$	637.73
85200236													
85200236					1	EACH	\$	61.40	FEDERAL AND STATE TAXES AND FEES - 6247715		6486	\$	61.40
85200236													
85200207					1	EACH	\$	70.08	FEDERAL AND STATE TAXES AND FEES - 16239725		6486	\$	70.08
85200241	10/08/2019	642477	ENERGY PETROLEUM COMPANY	400									
85200241					799.9	EACH	\$	1.86	NO LEAD 87 OCT RFG - 6249168		6486	\$	1,484.05
85200241													
85200241					1	EACH	\$	140.14	FEDERAL AND STATE TAXES AND FEES - 6249168		6486	\$	140.14
85200241					377.5	EACH	\$	2.10	#2 DIESEL ULTRA LS - 6249169		6486	\$	792.75
85200241													
85200241					1	EACH	\$	66.14	FEDERAL AND STATE TAXES AND FEES - 6249169		6486	\$	66.14
85200241					352.4	EACH	\$	1.86	NO LEAD 87 OCT RFG - 6249167		6486	\$	653.81
85200241													
85200241					1	EACH	\$	61.74	FEDERAL AND STATE TAXES AND FEES - 6249167				

85200241										6486	\$	61.74
85200251	10/10/2019	642477	ENERGY PETROLEUM COMPANY	400								
85200251					1600.3	EACH	\$	1.87	NO LEAD 87 OCT RFG - 6251410			
85200251										6486	\$	2,984.56
85200251					1	EACH	\$	280.37	FEDERAL AND STATE TAXES AND FEES - 6251410			
85200251										6486	\$	280.37
85200251					422.1	EACH	\$	2.13	#2 DIESEL ULTRA LS - 6251412			
85200251										6486	\$	896.96
85200251					1	EACH	\$	73.96	FEDERAL AND STATE TAXES AND FEES - 6251412			
85200251										6486	\$	73.96
85200251					419.5	EACH	\$	1.87	NO LEAD 87 OCT RFG - 6251411			
85200251										6486	\$	782.37
85200251					1	EACH	\$	73.50	FEDERAL AND STATE TAXES AND FEES - 6251411			
85200251										6486	\$	73.50
85200270	10/30/2019	642477	ENERGY PETROLEUM COMPANY	400								
85200270					400	EACH	\$	1.80	NO LEAD 87 OCT RFG - 6254980			
85200270										6486	\$	720.00
85200270					1	EACH	\$	70.08	FEDERAL AND STATE TAXES AND FEES - 6254980			
85200270										6486	\$	70.08
85200270					314.2	EACH	\$	1.97	#2 DIESEL ULTRA LS - 6254981			
85200270										6486	\$	617.40
85200270					1	EACH	\$	55.04	FEDERAL AND STATE TAXES AND FEES - 6254981			
85200270										6486	\$	55.04
85200270					1323	EACH	\$	1.80	NO LEAD 87 OCT RFG - 6254979			
85200270										6486	\$	2,381.40
85200270					1	EACH	\$	231.79	FEDERAL AND STATE TAXES AND FEES - 6254979			
85200270										6486	\$	231.79
85200274	10/30/2019	915734	SIEVEKING INC.	400								
85200274					1100.3	EACH	\$	1.94	353 N/L GASOHOL 87 OCTANE			
85200274										6486	\$	2,134.58
85200274					1	EACH	\$	196.47	FEDERAL AND STATE TAXES AND FEES ON 353 N/L GASOHOL 87 OCTANE			
85200274										6486	\$	196.47
85200288	11/22/2019	642477	ENERGY PETROLEUM COMPANY	400								
85200288					1081.8	EACH	\$	1.88	NO LEAD 87 OCT RFG - 6257132			
85200288										6486	\$	2,033.78
85200288					1	EACH	\$	189.54	FEDERAL AND STATE TAXES AND FEES - 6257132			
85200288										6486	\$	189.54

85200288					418.5	EACH	\$	1.88	NO LEAD 87 OCT RFG - 6257131			
85200288										6486	\$	786.78
85200288					1	EACH	\$	73.32	FEDERAL AND STATE TAXES AND FEES - 6257131			
85200288										6486	\$	73.32
85200289	11/22/2019	642477	ENERGY PETROLEUM COMPANY		400							
85200289					419	EACH	\$	1.81	NO LEAD 87 OCT RFG - 11741814			
85200289										6486	\$	758.39
85200289					1	EACH	\$	73.41	FEDERAL AND STATE TAXES AND FEES - 11741814			
85200289										6486	\$	73.41
85200289					580.4	EACH	\$	1.81	NO LEAD 87 OCT RFG - 11741816			
85200289										6486	\$	1,050.52
85200289					1	EACH	\$	101.69	FEDERAL AND STATE TAXES AND FEES - 11741816			
85200289										6486	\$	101.69
85200289					302.8	EACH	\$	2.12	#2 ULTRA LS DIESEL - 11741815			
85200289										6486	\$	641.94
85200289					1	EACH	\$	53.05	STATE AND FEDERAL TAXES AND FEES - 11741815			
85200289										6486	\$	53.05
85200315	12/09/2019	642477	ENERGY PETROLEUM COMPANY		400							
85200315					1600	EACH	\$	1.85	NO LEAD 87 OCT RFG - 6261204			
85200315										6486	\$	2,960.00
85200315					1	EACH	\$	280.32	FEDERAL AND STATE TAXES AND FEES - 6261204			
85200315										6486	\$	280.32
85200315					420	EACH	\$	1.85	NO LEAD 87 OCT RFG - 6261203			
85200315										6486	\$	777.00
85200315					1	EACH	\$	73.58	FEDERAL AND STATE TAXES AND FEES - 6261203			
85200315										6486	\$	73.58
85200326	01/02/2020	626035	HOME SERVICE OIL CO INC		400							
85200326					400.2	EACH	\$	1.94	RFG 87 OCT UNL REG			
85200326										6486	\$	776.39
85200326					1	EACH	\$	70.11	STATE AND FEDERAL TAXES AND FEES			
85200326										6486	\$	70.11
85200328	01/06/2020	915734	SIEVEKING INC.		400							
85200328					290.2	EACH	\$	1.79	353 N/L GASOHOL 87 OCTANE			
85200328										6486	\$	519.46
85200328					1	EACH	\$	4.80	FEDERAL AND STATE TAXES AND FEES ON 353 I			
85200328										6486	\$	4.80
85200328					1	EACH	\$	4.80	FEDERAL AND STATE TAXES AND FEES ON 353 I			
85200328										6486	\$	4.80
85200328					432.4	EACH	\$	1.85	353 N/L GASOHOL 87 OCTANE			

85200328									6486	\$	799.94
85200333	01/10/2020	642477	ENERGY PETROLEUM COMPANY	400							
85200333				500	EACH	\$	1.93	NO LEAD 87 OCT RFG			
85200333									6486	\$	965.00
85200333				1	EACH	\$	87.60	FEDERAL AND STATE TAXES AND FEES			
85200333									6486	\$	87.60
85200333				16.9	EACH	\$	2.26	#2 DIESEL ULTRA LS			
85200333				1	EACH	\$	2.96	FEDERAL AND STATE TAXES AND FEES			
85200333									6486	\$	38.19
85200333				350	EACH	\$	1.93	NO LEAD 87 OCT RFG			
85200333									6486	\$	2.96
85200333				1	EACH	\$	61.33	FEDERAL AND STATE TAXES AND FEES			
85200333									6486	\$	675.50
85200333				1	EACH	\$	2.26	#2 ULTRA PREM LSD - DIESEL			
85200333				300.1	EACH	\$	2.26	#2 ULTRA PREM LSD - DIESEL			
85200333				1	EACH	\$	52.58	STATE AND FEDERAL TAXES AND FEES			
85200333									6486	\$	61.33
85200333									6486	\$	678.23
85200335	01/22/2020	642477	ENERGY PETROLEUM COMPANY	400							
85200335				1200.3	EACH	\$	1.88	NO LEAD 87 OCT RFG			
85200335									6486	\$	2,256.56
85200335				1	EACH	\$	210.29	FEDERAL AND STATE TAXES AND FEES			
85200335									6486	\$	210.29
85200335				300.2	EACH	\$	1.91	#2 DIESEL ULTRA LS			
85200335				1	EACH	\$	52.59	FEDERAL AND STATE TAXES AND FEES			
85200335									6486	\$	573.38
85200335				420	EACH	\$	1.88	NO LEAD 87 OCT RFG			
85200335									6486	\$	52.59
85200335				1	EACH	\$	73.58	FEDERAL AND STATE TAXES AND FEES			
85200335									6486	\$	789.60
85200335				1	EACH	\$	2.26	#2 ULTRA PREM LSD - DIESEL			
85200335				300.1	EACH	\$	2.26	#2 ULTRA PREM LSD - DIESEL			
85200335				1	EACH	\$	52.58	STATE AND FEDERAL TAXES AND FEES			
85200335									6486	\$	73.58
85200335									6486	\$	678.23
85200335									6486	\$	52.58
85200345	01/28/2020	642477	ENERGY PETROLEUM COMPANY	400							
85200345				1300.2	EACH	\$	1.77	NO LEAD 87 OCT RFG			
85200345									6486	\$	2,301.35
85200345				1	EACH	\$	230.30	FEDERAL AND STATE TAXES AND FEES			
85200345									6486	\$	230.30
85200345				420	EACH	\$	1.77	NO LEAD 87 OCT RFG			
85200345									6486	\$	743.40
85200345				1	EACH	\$	74.39	FEDERAL AND STATE TAXES AND FEES			
85200345									6486	\$	74.39



85200366	02/13/2020	642477	ENERGY PETROLEUM COMPANY	400						
85200366					980	EACH	\$ 1.70	NO LEAD 87 OCT RFG		
85200366									6486	\$ 1,666.00
85200366					1	EACH	\$ 173.59	FEDERAL AND STATE TAXES AND FEES		
85200366									6486	\$ 173.59
85200366					410.1	EACH	\$ 1.70	NO LEAD 87 OCT RFG		
85200366									6486	\$ 697.17
85200366					1	EACH	\$ 72.65	FEDERAL AND STATE TAXES AND FEES		
85200366									6486	\$ 72.65
85200366					1	EACH	\$ 1.90	#2 ULTRA PREM LSD (SEASONAL)		
85200366									6486	\$ 1.90
85200366					1	EACH	\$ 57.68	STATE AND FEDERAL TAXES AND FEES		
85200366									6486	\$ 57.68
85200374	02/21/2020	642477	ENERGY PETROLEUM COMPANY	400						
85200374					350	EACH	\$ 1.71	NO LEAD 87 OCT RFG		
85200374									6486	\$ 599.55
85200374					1	EACH	\$ 62.00	FEDERAL AND STATE TAXES AND FEES		
85200374									6486	\$ 62.00
85200374					800	EACH	\$ 1.71	NO LEAD 87 OCT RFG		
85200374									6486	\$ 1,370.40
85200374					1	EACH	\$ 141.70	FEDERAL AND STATE TAXES AND FEES		
85200374									6486	\$ 141.70
85200375	02/27/2020	626035	HOME SERVICE OIL CO INC	400						
85200375					600	EACH	\$ 1.70	NO LEAD 87 OCT RFG		
85200375									6486	\$ 1,020.00
85200375					1	EACH	\$ 106.30	FEDERAL AND STATE TAXES AND FEES		
85200375									6486	\$ 106.30
85200375					400.1	EACH	\$ 1.70	NO LEAD 87 OCT RFG		
85200375									6486	\$ 680.17
85200375					1	EACH	\$ 70.87	FEDERAL AND STATE TAXES AND FEES		
85200375									6486	\$ 70.87
85200386	03/05/2020	642477	ENERGY PETROLEUM COMPAN	400						
85200386					420.3	EACH	1.76	NO LEAD 87 OCT RFG		
85200386									6486	\$ 739.73
85200386					1	EACH	74.44	FEDERAL AND STATE TAXES AND FEES		
85200386									6486	\$ 74.44
85200386					1175	EACH	1.76	NO LEAD 87 OCT RFG		
85200386									6486	\$ 2,068.00
85200386					1	EACH	208.13	FEDERAL AND STATE TAXES AND FEES		
85200386									6486	\$ 208.13
85200386					200	EACH	1.77	#2 ULTRA PREM LSD		
85200386									6486	\$ 354.00
85200386					1	EACH	35.47	FEDERAL AND STATE TAXES AND FEES		
85200386									6486	\$ 35.47
85200401	03/24/2020	800559	KIESEL COMPANY	400						

85200401					1576.7	EACH		1.6 87 OCT 10% ETHANOL BLEND GASOLINE				
85200401									6486	\$	2,522.72	
85200401					422.3	EACH		1.6 87 OCT 10% ETHANOL BLEND GASOLINE				
85200401									6486	\$	675.68	
85200401					1	EACH		435.86 FEDERAL AND STATE TAXES AND FEES				
85200401									6486	\$	435.86	
85200404	03/27/2020	642477	ENERGY PETROLEUM COMPAI	400								
85200404					423.2	EACH		1.1646 NO LEAD 87 OCT RFG				
85200404									6486	\$	492.86	
85200404					1	EACH		74.96 FEDERAL AND STATE TAXES AND FEES				
85200404									6486	\$	74.96	
85200404					1177.1	EACH		1.1646 NO LEAD 87 OCT RFG				
85200404									6486	\$	1,370.85	
85200404					1	EACH		208.5 FEDERAL AND STATE TAXES AND FEES				
85200404									6486	\$	208.50	
85200404					248.6	EACH		1.282 #2 ULTRA PREM LSD				
85200404									6486	\$	318.71	
85200404					1	EACH		44.08 FEDERAL AND STATE TAXES AND FEES				
85200404									6486	\$	44.08	
85200422	05/22/2020	626035	HOME SERVICE OIL CO INC	400								
85200422					307.7	EACH		0.98 RFG 87 OCT UNL REG				
85200422									6486	\$	301.55	
85200422					1	EACH		54.51 STATE AND FEDERAL TAXES AND FEES				
85200422									6486	\$	54.51	
85200422					380.8	EACH		1.2 #2 ULS DIESEL - CLEAR				
85200422									6486	\$	456.96	
85200422					1	EACH		67.53 STATE AND FEDERAL TAXES AND FEES				
85200422									6486	\$	67.53	
97200049	08/27/2019	800559	KIESEL COMPANY	500								
								PREMIUM ULTRA LOW SULFUR #2 DIESEL				
97200049					7500	EACH	\$	1.85 FUEL		6486	\$	13,867.50
97200049												
97200049					7500	EACH	\$	0.00 FED OIL SPILL FEE		6486	\$	16.05
97200049												
97200049					7500	EACH	\$	0.00 MO AGI TAX PER GAL EXTRA		6486	\$	7.50
97200049												
97200049					7500	EACH	\$	0.17 MO STATE TAX PER GAL		6486	\$	1,275.00
97200049												
97200049					7500	EACH	\$	0.00 MO ADG INSP. FEE TAX PER GAL		6486	\$	5.25
97200049												
97200049					7500	EACH	\$	0.00 MO USTD TRANSP. LOAD FEE TAX PER GAG		6486	\$	18.75
97200057	09/04/2019	800559	KIESEL COMPANY	500								
								PREMIUM ULTRA LOW SULFUR #2 DIESEL				
97200057					7500	EACH	\$	1.84 FUEL				
97200057									6486	\$	13,800.00	
97200057					7500	EACH	\$	0.00 FED OIL SPILL FEE				

97200057									6486	\$	16.05
97200057				7500	EACH	\$	0.00	MO. AGI TAX PER GAL. EXTRA			
97200057				7500	EACH	\$	0.17	MO. STATE TAX PER GAL	6486	\$	7.50
97200057				7500	EACH	\$	0.00	MO. ADG INSP. FEE TAX PER GAL	6486	\$	1,275.00
97200057				7500	EACH	\$	0.00	MO. ADG INSP. FEE TAX PER GAL	6486	\$	5.25
97200057				7500	EACH	\$	0.00	MO. USTD TRANSP. LOAD FEE TAX PER GAL	6486	\$	18.75
97200058	09/16/2019	626035	HOME SERVICE OIL CO INC	500							
								PREMIUM ULTRA LOW SULFUR # 2 DIESEL			
97200058				7500	EACH	\$	1.77	FUEL			
97200058				7500	EACH	\$	0.00	FED OIL SPILL FEE	6486	\$	13,293.75
97200058				7500	EACH	\$	0.00	FED OIL SPILL FEE	6486	\$	16.05
97200058				7500	EACH	\$	0.00	MO AGI TAX PER GAL EXTRA	6486	\$	7.50
97200058				7500	EACH	\$	0.17	MO STATE TAX PER GAL	6486	\$	1,275.00
97200058				7500	EACH	\$	0.00	MO ADG INSP. FEE TAX PER AL	6486	\$	5.25
97200058				7500	EACH	\$	0.00	MO USTD TRANSP LOAD FEE TAX PER GAL	6486	\$	18.75
97200065	09/26/2019	626035	HOME SERVICE OIL CO INC	500							
								PREMIUM ULTRA LOW SULFUR #2 DIESEL			
97200065				7500	EACH	\$	2.13	FUEL			
97200065				7500	EACH	\$	0.00	FED OIL SPILL FEE	6486	\$	16,002.75
97200065				7500	EACH	\$	0.00	FED OIL SPILL FEE	6486	\$	16.05
97200065				7500	EACH	\$	0.00	MO AGI TAX PER GAL EXTRA	6486	\$	7.50
97200065				7500	EACH	\$	0.17	MO STATE TAX PER GAL	6486	\$	1,275.00
97200065				7500	EACH	\$	0.00	MO ADG INSP. FEE TAX PER GAL	6486	\$	5.25
97200065				7500	EACH	\$	0.00	MO USTD TRANSP. LOAD FEE TAX PER GAL	6486	\$	18.75
97200066	10/04/2019	642477	ENERGY PETROLEUM COMPANY	500							
97200066				7500	EACH	\$	2.03	PREMIUM ULTRA LOW SULFUR #2 DIESEL FUEL BID #20P-47			
97200066				7500	EACH	\$	0.00	MO USTD TRANSP. LOAD FEE TAX PER GAL	6486	\$	15,207.00

97200066					7500	EACH	\$	0.00	FED OIL SPILL FEE			
97200066										6486	\$	16.05
97200066					7500	EACH	\$	0.00	MO. AGI TAX PER GAL. EXTRA			
97200066										6486	\$	7.50
97200066					7500	EACH	\$	0.17	MO STATE TAX PER GAL			
97200066										6486	\$	1,275.00
97200066					7500	EACH	\$	0.00	MO ADG INSP FEE TAX PER GAL			
97200066										6486	\$	5.25
97200066					7500	EACH	\$	0.00	MO USTD TRANSP LOAD FEE TAX PER GAL			
97200066										6486	\$	18.75
97200067	10/10/2019	642477	ENERGY PETROLEUM COMPANY	500								
97200067					7500	EACH	\$	2.00	PREMIUM ULTRA LOW SULFUR #2 DIESEL FUEL			
97200067										6486	\$	15,000.00
97200067					7500	EACH	\$	0.00	FED. OIL SPILL FEE			
97200067										6486	\$	16.05
97200067					7500	EACH	\$	0.00	MO AGI TAX PER GAL. EXTRA			
97200067										6486	\$	7.50
97200067					7500	EACH	\$	0.17	MO STATE TAX PER GAL			
97200067										6486	\$	1,275.00
97200067					7500	EACH	\$	0.00	MO ADG INSP. FEE TAX PER GAL			
97200067										6486	\$	5.25
97200067					7500	EACH	\$	0.00	MO. USTD TRANSP. LOAD FEE TAX PER GAL			
97200067										6486	\$	18.75
97200071	10/30/2019	626035	HOME SERVICE OIL CO INC	500								
97200071					7500	EACH	\$	1.98	PREMIUM, ULTRA LOW SULFUR #2 DIESEL FUEL			
97200071										6486	\$	14,850.00
97200071					7500	EACH	\$	0.00	FED. OIL SPILL FEE			
97200071										6486	\$	16.05
97200071					7500	EACH	\$	0.00	MO.AGI TAX PER GAL. EXTRA			
97200071										6486	\$	7.50
97200071					7500	EACH	\$	0.17	MO. STATE TAX PER GAL			
97200071										6486	\$	1,275.00
97200071					7500	EACH	\$	0.00	MO. ADG INSP. FEE TAX PER GAL			
97200071										6486	\$	5.25
97200071					7500	EACH	\$	0.00	MO. USTDTRANSP. LOAD FEE TAX PER GAL			
97200071										6486	\$	18.75
97200076	11/12/2019	642477	ENERGY PETROLEUM COMPANY	500								
97200076					7500	EACH	\$	2.04	PREMIUM ULTRA LOW SULFUR #2 DIESEL FUEL TREATED BID # 20P-62			

97200076								6486	\$	15,262.50
97200076				7500	EACH	\$	0.00	FED OIL SPILL FEE		
97200076								6486	\$	16.05
97200076				7500	EACH	\$	0.00	MO AGI TAX PER GAL EXTRA		
97200076								6486	\$	7.50
97200076				7500	EACH	\$	0.17	MO STATE TAX PER GALLON		
97200076								6486	\$	1,275.00
97200076				7500	EACH	\$	0.00	MO ADG INSP. FEE TAX PER GALLON		
97200076								6486	\$	5.25
97200076				7500	EACH	\$	0.00	MO USTD TRANSP. LOAD FEE TAX PER GALLON		
97200076								6486	\$	18.75
97200077	11/14/2019	642477	ENERGY PETROLEUM COMPANY	500						
97200077										
97200077				7500	EACH	\$	2.09	PREMIUM ULTRA LOW SULFUR #2 DIESEL FUEL TREATED		
97200077								6486	\$	15,675.00
97200077				7500	EACH	\$	0.00	FED OIL SPILL FEE		
97200077								6486	\$	16.05
97200077				7500	EACH	\$	0.00	MO AGI TAX PER GAL. EXTRA		
97200077								6486	\$	7.50
97200077				7500	EACH	\$	0.17	MO STATE TAX PER GAL		
97200077								6486	\$	1,275.00
97200077				7500	EACH	\$	0.00	MO. ADG INSP. FEE TAX PER GAL		
97200077								6486	\$	5.25
97200077				7500	EACH	\$	0.00	MO. USTD TRANSP. LOAD FEE TAX PER GAL		
97200077								6486	\$	18.75
97200078	12/03/2019	642477	ENERGY PETROLEUM COMPANY	500						
97200078										
97200078				7500	EACH	\$	1.92	PREMIUM ULTRA LOW SULFUR #2 DIESEL FUEL TREATED		
97200078								6486	\$	14,400.00
97200078				7500	EACH	\$	0.00	FED OIL SPILL FEE		
97200078								6486	\$	16.05
97200078				7500	EACH	\$	0.00	MO AGI TAX PER GAL EXTRA		
97200078								6486	\$	7.50
97200078				7500	EACH	\$	0.17	MO STATE TAX PER GAL		
97200078								6486	\$	1,275.00
97200078				7500	EACH	\$	0.00	MOADG INSP. FEE TAX PR GAL		
97200078								6486	\$	5.25
97200078				7500	EACH	\$	0.00	MO USTD TRANSP. LOAD FEE TAX PER GAL		
97200078								6486	\$	18.75
97200086	12/18/2019	626035	HOME SERVICE OIL CO INC	500						
97200086										
97200086				7500	EACH	\$	1.92	PREMIUM ULTRA LOW SULFUR #2 DIESEL FUEL TREATED - BID # 20P-79		

97200086									6486	\$	14,407.50
97200086				7500	EACH	\$	0.00	FED OIL SPILL FEE			
97200086									6486	\$	16.05
97200086				7500	EACH	\$	0.00	MO AGI TAX PER GAL. EXTRA			
97200086									6486	\$	7.50
97200086				7500	EACH	\$	0.17	MO.STATE TAX PER GAL			
97200086									6486	\$	1,275.00
97200086				7500	EACH	\$	0.00	MO.ADG INSP. FEE TAX PER GAL			
97200086									6486	\$	5.25
97200086				7500	EACH	\$	0.00	MO.USTD TRANSP. LOAD FEE TAX PER GAL.			
97200086									6486	\$	18.75
97200087	01/02/2020	626035	HOME SERVICE OIL CO INC	500							
97200087											
97200087				7500	EACH	\$	1.98	PREMIUM ULTRA LOW SULFUR #2 DIESEL FUEL			
97200087									6486	\$	14,841.00
97200087				7500	EACH	\$	0.00	FED OIL SPILL FEE			
97200087									6486	\$	16.05
97200087				7500	EACH	\$	0.00	MO AGI TAX PER GAL EXTRA			
97200087									6486	\$	7.50
97200087				7500	EACH	\$	0.17	MO STATE TAX PER GAL			
97200087									6486	\$	1,275.00
97200087				7500	EACH	\$	0.00	MO ADG INSP FEE TAX PER GAL			
97200087									6486	\$	5.25
97200087				7500	EACH	\$	0.00	MO USTD TRANSP LOAD FEE TAX PER GAL			
97200087									6486	\$	18.75
97200094	01/21/2020	642477	ENERGY PETROLEUM COMPANY	500							
97200094											
97200094				7500	EACH	\$	1.90	PREMIUM ULTRA LOW SULFUR #2 DIESEL FUEL			
97200094									6486	\$	14,250.00
97200094				7500	EACH	\$	0.00	MO.AGI TAX PER GAL. EXTRA			
97200094									6486	\$	7.50
97200094				7500	EACH	\$	0.17	MO STATE TAX PER GALLON			
97200094									6486	\$	1,275.00
97200094				7500	EACH	\$	0.00	MO ADG INSP. FEE TAX PER GAL			
97200094									6486	\$	5.25
97200094				7500	EACH	\$	0.00	MO. USTD TRANSP. LOAD FEE TAX PER GAL			
97200094									6486	\$	18.75
97200094				7500	EACH	\$	0.00	FED OIL SPILL FEE			
97200094									6486	\$	16.05
97200101	01/27/2020	642477	ENERGY PETROLEUM COMPANY	500							
97200101											
97200101				7500	EACH	\$	1.83	PREMIUM ULTRA LOW SULFUR #2 DIESEL FUEL			
97200101									6486	\$	13,687.50
97200101				7500	EACH	\$	0.00	FED OIL SPILL FEE			
97200101									6486	\$	16.05

97200101					7500	EACH	\$	0.00	MO AGI TAX PER GAL. EXTRA			
97200101										6486	\$	7.50
97200101					7500	EACH	\$	0.17	MO STATE TAX PER GAL			
97200101										6486	\$	1,275.00
97200101					7500	EACH	\$	0.00	MO ADG INSP. FEE TAX PER GAL			
97200101										6486	\$	5.25
97200101					7500	EACH	\$	0.00	MO USTD TRANSP. LOAD FEE TAX PER GAL			
97200101										6486	\$	18.75
97200104	02/10/2020	642477	ENERGY PETROLEUM COMPANY		500							
97200104					7500	EACH	\$	1.68	PREMIUM ULTRAL LOW SULFUR #2 DIESEL FUE			
97200104										6486	\$	12,600.00
97200104					7500	EACH	\$	0.00	FED OIL SPILL FEE			
97200104										6486	\$	16.05
97200104					7500	EACH	\$	0.00	MO. AGI TAX PER GAL. EXTRA			
97200104										6486	\$	7.50
97200104					7500	EACH	\$	0.17	MO. STATE TAX PER GAL			
97200104										6486	\$	1,275.00
97200104					7500	EACH	\$	0.00	MO ADG INSP. FEE TAX PER GAL			
97200104										6486	\$	5.25
97200104					7500	EACH	\$	0.00	MO. USTD TRANSP. LOAD FEE TAX PER GAL			
97200104										6486	\$	18.75
97200105	02/19/2020	800559	KIESEL COMPANY		500							
97200105					7500	EACH	\$	1.66	PREMIUM ULTRA LOW SULFUR #2 DIESEL FUEL			
97200105										6486	\$	12,442.50
97200105					7500	EACH	\$	0.00	FED OIL SPILL FEE			
97200105										6486	\$	16.05
97200105					7500	EACH	\$	0.00	MO AGI TA PER GAL. EXTRA			
97200105										6486	\$	7.50
97200105					7500	EACH	\$	0.17	MO. STATE TAX PER GAL			
97200105										6486	\$	1,275.00
97200105					7500	EACH	\$	0.00	MO . ADG INSP. FEE TAX PER GAL			
97200105										6486	\$	5.25
97200105					7500	EACH	\$	0.00	MO. USTD TRANSP. LOAD FEE TAX PER GAL.			
97200105										6486	\$	18.75
97200110	02/27/2020	642477	ENERGY PETROLEUM COMPANY		500							
97200110					7500	EACH	\$	1.72	PREMIUM ULTRA LOW SULFUR # 2 DIESEL FUEI			
97200110										6486	\$	12,900.00
97200110					7500	EACH	\$	0.00	FED OIL SPILL FEE			
97200110										6486	\$	16.05
97200110					7500	EACH	\$	0.00	MO AGI TAX PER GAL. EXTRA			
97200110										6486	\$	7.50
97200110					7500	EACH	\$	0.17	MO STATE TAX PER GAL			
97200110										6486	\$	1,275.00
97200110					7500	EACH	\$	0.00	MO ADG INSP. FEE TAX PER GAL			
97200110										6486	\$	5.25
97200110					7500	EACH	\$	0.00	MO USTD TRANSP LOAD FEE TAX PER GAL			

97200110									6486	\$	18.75
97200124	03/11/2020	642477	ENERGY PETROLEUM COMPAI	500							
97200124					7500	EACH	1.61 PREMIUM ULTRA LOW SULFUR #2 DIESEL TREA				
97200124								6486	\$	12,075.00	
97200124					7500	EACH	0.00214 FED OIL SPILL FEE				
97200124								6486	\$	16.05	
97200124					7500	EACH	0.001 MO AGI TAX PER GAL. EXTRA				
97200124								6486	\$	7.50	
97200124					7500	EACH	0.17 MO STATE TAX PER GAL				
97200124								6486	\$	1,275.00	
97200124					7500	EACH	0.0007 MO ADG INSP. FEE TAX PER GAL				
97200124								6486	\$	5.25	
97200124					7500	EACH	0.0025 MO USTD TRANSP. LOAD FEE TAX PER GAL				
97200124								6486	\$	18.75	
97200127	04/06/2020	642477	ENERGY PETROLEUM COMPAI	500							
97200127					7500	EACH	1.25 PREMIUM ULTRA LOW SULFUR #2 DIESEL FUEL				
97200127								6486	\$	9,375.00	
97200127					7500	EACH	0.00214 FED OIL SPILL FEE				
97200127								6486	\$	16.05	
97200127					7500	EACH	0.001 MO AGI TAX PER GAL. EXTRA				
97200127								6486	\$	7.50	
97200127					7500	EACH	0.17 MO STATE TAX PER GAL				
97200127								6486	\$	1,275.00	
97200127					7500	EACH	0.0007 MO ADG INSP. FEE TAX PER GAL				
97200127								6486	\$	5.25	
97200127					7500	EACH	0.0025 MO USTD TRANSP. LOAD FEE TAX PER GAL				
97200127								6486	\$	18.75	
85200193	08/22/2019	800066	INDUSTRIAL SOAP CO	401							
							TRASH CAN LINERS 40" X 48" - 16 MICRON - HIGH DENSITY ONLY - CLEAR - STAR SEALED (250/CASE)				
							APPROX CASE WGT: 21.6# #MR40483MC				
85200193					400	EACH	\$ 17.60 50CASES PER PALLET				
85200193								6411	\$	7,040.00	
85200233	09/23/2019	800066	INDUSTRIAL SOAP CO	401							
							#MR40483MC LARGE TRASH CAN LINERS 40" X 48" - 16 MICRON ONLY 50 CASES / PALLET - HIGH DENSITY ONLY - CLEAR - STAR SEALED 250/CASE APPROX CASE WGT 21.6#				
85200233					400	EACH	\$ 17.25				
85200233								6411	\$	6,900.00	
85200234	09/23/2019	914674	UNIPAK CORP.	401							



85200234									#24R UPC SMALL TRASH CAN LINERS 24" X 23" - 0.4 MIL LINEAR LOW DENSITY ONLY - CLEAR STAR SEALED - 1000 / CASE			
85200234					200	EACH	\$	14.50	APPROX. CASE WGT: 15.2#			
85200293	11/22/2019	800066	INDUSTRIAL SOAP CO	401							6411	\$ 2,900.00
85200293					400	EACH	\$	17.25	40" X 48" - 16 MICRON - HIGH DENSITY ONLY CLEAR STAR SEALED (250/CASE) APPROX. CASE WGT : 21.6# PITT PLASTIC #MR40483MC 50 CASES / PALLET ONLY			
85200293											6411	\$ 6,900.00
85200298	11/22/2019	914674	UNIPAK CORP.	401								
85200298					800	EACH	\$	9.67	33" X 39" - 1.3 MIL LINEAR LOW DENSITY ONLY - CLEAR - STAR SEALED - (100/CASE) - APPROX CASE WGT: 11.15# UPC #4013 100CASES / PALLET			
85200298											6411	\$ 7,736.00
85200400	03/20/2020	914674	UNIPAK CORP.	401								
85200400					500	EACH		16.9	TRASH CAN LINERS - 40" X 48" - 16 MICRON		6411	\$ 8,450.00
85200400												
81200026	07/03/2019	913529	VACCARO & SONS PRODUCE	700	1	EACH	\$	9,850.00	BLANKET PO		6471	\$ 9,850.00
81200040	11/12/2019	913529	VACCARO & SONS PRODUCE	700	1	EACH	\$	26,000.00	BLANKET PO			
81200040											6471	\$ 26,000.00
81200045	02/10/2020	913529	VACCARO & SONS PRODUCE	700								
81200045					1	EACH	\$	9,000.00	BLANKET PO		6471	\$ 9,000.00
81200045												
81200048	03/04/2020	913425	SUNFARM	700								
81200048					1	EACH		26000	BLANKET PO		6471	\$ 26,000.00
81200048												
<b>Total Commodity 202 (Paper)</b>											\$	165,311.60
<b>Total Commodity 400 (Fuel - Facilities)</b>											\$	82,166.11
<b>Total Commodity 500 (Fuel - Transportation)</b>											\$	289,065.45
<b>Total Commodity 401 (Trash Liners)</b>											\$	39,926.00
<b>Total Commodity 700 (Produce)</b>											\$	70,850.00
<b>Grand Total All Commodity</b>											\$	<b>647,319.16</b>